

  
**SANDHILL**  
 RED ANGUS

**Tuesday, March 5<sup>TH</sup> 2024**

Annual Production Sale 1:00 P.M. MST Sidney Livestock Market Center, Sidney Montana



**LOT 5**

**SRJJ LEADING EDGE 3018**  
 5L LEADING EDGE 15383-117C x RED T-K TEN SPEED 52F Daughter

*Sale Featuring*  
**140 Bred Heifers**  
 Commercial Red Angus

**80 Red Angus**  
**Yearling Bulls**  
 Breed Leading Genetics

- ★ One Year Breeding Guarantee On Bulls
- ★ Bulls Are Delivered For Free In USA & CA
- ★ Bulls Fed Free Until April 1<sup>st</sup>



**LOT 19**

**SRJJ HIGH TIME 3092**  
 SRJJ HIGH TIME 0024 x CRUMP PACESETTER 491 Daughter



**LOT 1**

**SRJJ CUTTING EDGE 3194**  
 RED T-K CUTTING EDGE 127D x RED BRAND X05 Daughter



**LOT 6**

**SRJJ SLOWBURN 3067**  
 RED LWNBRG SLOWBURN 102H x RED U2 KID ROCK 365F Daughter

**WWW.SANDHILLREDANGUS.COM**





## *Welcome to our Annual Production Sale!*

*Welcome to our Annual Production Sale. We would like to say thank you to all of our customers for the confidence you have in our program. We greatly appreciate the support and loyalty you have placed in our herd. At Sandhill Red Angus we stay dedicated to producing the best genetics possible. We talk about consistency all the time here at Sandhill Red Angus. We believe that the biggest contribution to our consistency is our females. They must be long bodied, huge middled, and stay functional. For us, being functional means having a perfect udder, good feet, and breeding up on time every year while raising a big calf.*

*I would like to take this time and thank all of our friends, neighbors, and family that help us. We are very blessed to be surrounded by such a great community, and have the opportunity to serve our customers and the Red Angus breed.*

### *Andrew Johnson & Family*

*5175 Road 1026, Froid, Montana 59226*

*sandhill\_reds@yahoo.com*

*Andrew Johnson (406) 489-3773*

*McKenzie Johnson (406) 489-0542*

### *Welcome from Shane Castle*

*It's been a great pleasure to tour through and evaluate the program at Froid of Sandhill Red Angus and to right away notice and appreciate the rigors of which the herd must adhere to for their survival. For the betterment of breeding and genetics, having a seed-stock outfit put the cattle through the*

*paces year round can only garner any ranchers respect. Having mother nature apply pressure undoubtedly will reveal who is earning their keep and who isn't. With keeping their foot to the floor and no reason to let up on the cows, yet continue to jump the hurdles, we will find out who has what it takes to reach the finish line. Breeding cattle isn't a difficult task for a cow. Producing a live calf, weaning a good healthy calf, and re-breeding in a limited time will let the wheat sort itself from the chaff. It is clearly evident that this is the case for Andrew and McKenzie! By incorporating the genetics which are clearing their hurdles, you will notice a number of calves sired by their own home raised calves. Simply plugging in the good cows as many times as you can is certainly a recipe for genetic progress and breed betterment, ultimately landing on the real goal of being profitable! Feel welcome to direct any questions you may have our way, we look forward to hearing from you!*

*Shane Castle, Castlerock Marketing (306) 741-7485*



*Andrew, McKenzie, Joslyn(9), Jett(7), Jayna(3)*



## SALE LOCATION

SIDNEY LIVESTOCK MARKET CENTER  
Office (406) 482-3513  
Tim Larson, Manager (406) 480-2666  
Christy Albin, Office Manager (406) 482-3513  
720 10TH AVE SE  
SIDNEY, MT 59270  
WWW.SIDNEYLIVESTOCK.COM

## AUCTIONEER

Joe Goggins (406) 861-5664

## SALE DAY PHONE NUMBERS

Andrew Johnson (406) 489-3773  
McKenzie Johnson (406) 489-0542  
Scott Fraser, Frontier Live Sale (406) 860-6548  
Sam Fraser, Frontier Live Sale (406) 860-0590  
Rachael Oliver, RAAA Commercial Marketing Specialist (406) 480-1569  
Wrye Williams, Tri-State Livestock News (406) 938-3071  
Matt Wznick, Western Ag Reporter (406) 489-2414  
Devin Murnin, Western Livestock Journal (406) 696-1502  
Shane Castle, Castlerock Marketing (306) 741-7485  
Devin Warrilow, Castlerock Marketing (780) 581-4329



## CATTLE SELL IN CATALOG ORDER

### BIDDING

The Auctioneer in charge will settle any disputes as to bids, and their decision on such matters shall be final.

### ONLINE BIDDING

Frontier Live Sale  
Pre-Register at [www.FrontierLiveSale.com](http://www.FrontierLiveSale.com)  
If you prefer to be on the phone contact  
Andrew (406) 489-3773 or Scott (406) 860-6548  
**VIDEOS OF EVERY LOT @ [WWW.FRONTIERLIVESALE.COM](http://WWW.FRONTIERLIVESALE.COM)**



### ACCOMMODATIONS

Candlewood Suites  
201 6th Street NW  
Sidney, MT 59270  
(406) 482-9692

### DELIVERY

**\$250 DISCOUNT PER BULL TAKEN HOME SALE DAY**  
Bulls will be fed free of charge until April 1st  
Bulls will be delivered free of charge. We will assist in any way possible with transportation of the females in the sale.

## SCHEDULE OF EVENTS

**MONDAY, MARCH 4<sup>TH</sup>**  
11AM-5PM CATTLE VIEWING  
AT SIDNEY LIVESTOCK

5PM COMPLEMENTARY SUPPER & SOCIAL  
AT THE **SALOON 27**

**NEW NAME, SAME LOCATION, SAME BUILDING!**  
LOCATED AT 520 NORTH CENTRAL AVE IN SIDNEY

**TUESDAY, MARCH 5<sup>TH</sup>**  
8AM-11AM CATTLE VIEWING

11AM LUNCH WILL BE SERVED  
IN THE SALE BARN

**1PM MOUNTAIN TIME  
LIVE AUCTION STARTS**

FEMALES SELL FIRST  
FOLLOWED BY THE BULLS

### INSURANCE/BREEDING GUARANTEE

Sandhill Red Angus personally guarantees that all bulls have a one year breeding guarantee. If a bull is unable to breed, the buyer will be given a replacement bull of equal quality as acceptable to buyer or credit on next year's sale. Austin O'Dea with O'Dea Agency is available with other insurance options. (406) 766-2205

### TERMS & CONDITIONS

All cattle sell under the standard terms & condition of the American Red Angus Association.

### INSPECTION OF SALE CATTLE

Cattle will be available for viewing at the ranch prior to the sale, contact Andrew to set up a time to take a tour. Cattle will be transported to Sidney Livestock the Sunday before the sale.

### UPDATED INFORMATION

Ultrasound Data, Ultrasound Weight, & Scrotal Measurements will be available on sale day & on our website.  
**VIDEOS OF EVERY LOT @ [WWW.FRONTIERLIVESALE.COM](http://WWW.FRONTIERLIVESALE.COM)**

### SEMEN INTEREST

Sandhill Red Angus will retain 50% semen interest in all bulls selling.

### HEALTH

All bulls & females are in good health. They are up date with wormer & vaccinations advised by High Plains Veterinary.

**WWW.SANDHILLREDANGUS.COM**



# REFERENCE SIRES

## RED U2 FORTUNATE SON 382F

DOB: **01-29-2018** RAAA#: **4207646**

RED U6 HESSTON 14Z	BLACK WHEEL ODYSSEY 117U RED U6 ALANA 65T	PERF.	RATIO
<b>RED HOWE HESSTON 212C</b>		BW	<b>90</b>
RED HOWE MS ARAB 170X	RED LAZY MC HUSTLE 18T RED HOWE MS ARAB 13T		<b>103</b>
		205	<b>872</b>
RED HOWE MAGNUM 169W	RED LAZY MC HUSTLE 18T RED HOWE MS MAT 216N	WWT	<b>103</b>
<b>RED U-2 ANEXA 271Y</b>		365	<b>1530</b>
RED U-2 ANEXA 333N	RED BAR-E L APPROVAL 4L RED U-2 ANEXA 5F	YWT	<b>108</b>

HB	GM	CED	BW	WW	YW	ADG	MILK	ME	HPG	CEM	STAY	MARB	YG	CW	REA	FAT
14	11	5	5.2	75	119	0.28	26	8	10	1	14	0.05	0.01	34	0.42	0.02
92%	92%	99%	99%	16%	19%	26%	48%	72%	78%	98%	64%	97%	23%	23%	13%	44%

RED U2 FORTUNATE SON 382F



## RED U2 BLUE COLLAR 295E

DOB: **02-21-2017** RAAA#: **3927955**

RED U-2 RECON 192Y	RED U2 MISSION 61W RED U-2 LARKABA 8130U	PERF.	RATIO
<b>RED U-2 RECKONING 149A</b>		BW	<b>82</b>
RED U-2 ANEXA 271Y	RED HOWE MAGNUM 169W RED U-2 ANEXA 333N		<b>103</b>
		205	<b>859</b>
RED NINBURN COPENHAGEN 3Y	RED RMJ REDMAN 1T MINBURN MAY 112M	WWT	<b>112</b>
<b>RED U-2 ANEXA 439A</b>		365	<b>1482</b>
RED U-2 ANEXA 443Y	RED HOWE MAGNUM 169W RED U-2 ANEXA 127W	YWT	<b>113</b>

HB	GM	CED	BW	WW	YW	ADG	MILK	ME	HPG	CEM	STAY	MARB	YG	CW	REA	FAT
42	24	9	1.2	70	109	0.25	30	-5	6	7	14	0.34	0.06	23	0.24	0.03
63%	63%	86%	90%	28%	34%	43%	20%	15%	98%	52%	61%	64%	44%	54%	31%	74%

RED U2 BLUE COLLAR 295E



## RED T-K CUTTING EDGE 127D

DOB: **03-28-2016** RAAA#: **4058708**

RED JENSEN CACTUS SKY 25S	RED JENSEN CACTUS 320N RED THAT'LL DO DAWN	PERF.	RATIO
<b>RED JENSEN CACTUS 2Z</b>		BW	<b>81</b>
RED JENSEN IRASTONE 5521R	RED H70 QUANTOCK 387L RED TOWAW LADY IRASTONE 5D		<b>94</b>
		205	<b>833</b>
RED U-2 DYNAMO 7021T	RED FLYING K DYNAMO 6TK RED U-2 ANEXA 549R	WWT	<b>111</b>
<b>RED D-BAR SOXRO 61W</b>		365	<b>1266</b>
RED D-BAR SOXRO 28S	RED STEWART PATHFINDER 5L RED TOP LINE SOXRO 2K	YWT	<b>112</b>

HB	GM	CED	BW	WW	YW	ADG	MILK	ME	HPG	CEM	STAY	MARB	YG	CW	REA	FAT
42	21	11	-0.5	59	104	0.28	36	7	12	6	15	0.1	-0.06	19	0.26	-0.01
64%	64%	71%	71%	63%	43%	23%	2%	67%	45%	70%	49%	95%	9%	65%	28%	11%

RED T-K CUTTING EDGE 127D



## RED T-K TEN SPEED 52F

DOB: **02-26-2018** RAAA#: **4201264**

RED GLESBAR CAPONE 28Y	RED NORTHLINE FAT TONY 805U RED GLESBAR SYRINGA 43R	PERF.	RATIO
<b>RED GLESBAR CAPONE 23B</b>		BW	<b>84</b>
RED GLESBAR LAKIMA 102X	RED GEIS AVIATOR 670T RED GLESBAR LAKIMA 60P		<b>99</b>
		205	<b>807</b>
RED ANCHOR 1 HITCH 52T	RED YY HITCH 514R RED CROWFOOT BRNDINA 4005P	WWT	<b>108</b>
<b>RED ANCHOR 1 MISS RIB 6Y</b>		365	<b>1266</b>
RED KBJ MISS RIB 1007R	RED KBJ LOGAN 892N RED R & M 1007K MISS RIB 57M	YWT	<b>108</b>

HB	GM	CED	BW	WW	YW	ADG	MILK	ME	HPG	CEM	STAY	MARB	YG	CW	REA	FAT
53	35	6	3.6	77	129	0.33	20	2	10	3	17	0.25	-0.08	26	0.45	0
45%	45%	98%	99%	12%	8%	8%	88%	39%	77%	94%	21%	80%	7%	44%	11%	13%

RED T-K TEN SPEED 52F



## SRJJ HIGH TIME 0024

DOB: **02-26-2020** RAAA#: **4336327**

TER-RON PARK PLACE 18Y	HF TIGER 5T RED TER-RON GOLDIE 240L	PERF.	RATIO
<b>RED TER-RON PARKER 34A</b>		BW	<b>76</b>
RED TER-RON DIAMOND MIST 164	RED LAZY MC KINGMAN 18W RED TER-RON DIAMOND MIST 29S		<b>108</b>
		205	<b>582</b>
LARSON THUNDERBIRD 936	MESSMER PACKER 5008 LARSON ELIZABETH 651-111	WWT	<b>1166</b>
<b>936 ECHO 2526</b>		365	<b>1166</b>
ECHO 091 2526	LORENZEN TOP CUT 8355 ECHO 091 1127	YWT	<b>1166</b>

HB	GM	CED	BW	WW	YW	ADG	MILK	ME	HPG	CEM	STAY	MARB	YG	CW	REA	FAT
1	11	6	2.6	79	124	0.28	18	7	12	0	11	0.08	-0.05	33	0.47	0
97%	97%	97%	97%	9%	12%	22%	95%	68%	48%	99%	87%	96%	11%	25%	10%	18%

SRJJ HIGH TIME 0024





# REFERENCE SIRES

## RED LWNBRG SLOWBURN 102H

DOB: **01-30-2020** RAAA#: **4689627**

RED HOWE HESSTON 212C  
**RED U2 DOMINION**  
 RED U2 HIDEE HO 459D

RED U-2 RENOWN 193C  
**RED U2 FAVORITE 275F**  
 RED KBJ FAVORITE 931B

RED UR HESSTON 14Z  
 RED HOWE MS ARAB 170X

RED HOWE MAGNUM 169W  
 RED U-2 HIDEE HO 281Y

RED U-2 RECKONING 149A  
 RED U-2 ENVOIOUS 147X

RED U-2 MAUI BUILT 38Y  
 RED KBJ FAVORITE 888Y

PERF. RATIO  
 BW **79** **98**  
 205 **840** **110**  
 WWT  
 365 **1378** **108**  
 YWT

HB	GM	CED	BW	WW	YW	ADG	MILK	ME	HPG	CEM	STAY	MARB	YG	CW	REA	FAT
4	19	8	2.4	77	120	0.27	24	6	7	2	12	0.22	-0.03	27	0.37	0.01
96%	96%	91%	96%	12%	17%	29%	64%	60%	95%	97%	79%	84%	13%	42%	17%	25%

## RED LWNBRG SLOWBURN 102H



## DVO RIGHT OF FIRST REFUSAL

DOB: **03-06-2019** RAAA#: **4084406**

RED CROWFOOT 4ACES 2193Z  
**RED BAR-E-L FIRST DOWN 161D**  
 RED BAR-E-L GLORIA 87R

RED BAR-E-L FIRST DOWN 161D  
**DVO PRINCENE**  
 CROWFOOT PRINCENE 6009S

XO CROWFOOT 0102X  
 RED CROWFOOT MISS STRTCH

RED BAR-E-L APPROVAL 4L  
 RED BAR-E-L FIRST LADY 95J

RED CROWFOOT 4ACES 2193Z  
 RED BAR-E-L GLORIA 87R

CROWFOOT MAX 1743L  
 CROWFOOT BIRD 4207P

PERF. RATIO  
 BW **94**  
 205 **768**  
 WWT  
 365 **1217**  
 YWT

HB	GM	CED	BW	WW	YW	ADG	MILK	ME	HPG	CEM	STAY	MARB	YG	CW	REA	FAT
60	9	10	0.6	65	108	0.27	22	-4	13	4	16	0.07	0.06	10	0.06	0.03
33%	33%	76%	85%	42%	37%	32%	81%	16%	29%	91%	37%	96%	43%	87%	62%	66%

## DVO RIGHT OF FIRST REFUSAL G668



## SRJJ FALCON 8087

DOB: **03-25-2018** RAAA#: **3981314**

5L OUT IN FRONT 1701-457B  
**JACOBSON WEIGHT OUT 6171**  
 JACOBSON HEIDI 2099

LELAND RED DIRECTION 8348U  
**RED FOUN Y65**  
 HAMMEL FOUNDATION P65

C-T THE QUEST 1103  
 5L FIREFLY 3109-1701

BASIN EXT 1925  
 SEEGER HEIDI

5L RED DIRECTION 691-6046  
 LELAND GRAND CANYON 1024

MILK CRK FOUNDATION 110  
 MS HAMMEL R-CLOUD H210

PERF. RATIO  
 BW **83** **101**  
 205 **728** **114**  
 WWT  
 365 **1189** **105**  
 YWT

HB	GM	CED	BW	WW	YW	ADG	MILK	ME	HPG	CEM	STAY	MARB	YG	CW	REA	FAT
66	23	11	-0.5	67	104	0.23	27	6	10	9	17	0.48	0.07	13	0.12	0.04
24%	24%	67%	71%	35%	43%	54%	38%	61%	72%	21%	24%	38%	47%	81%	50%	75%

## SRJJ FALCON 8087



## 5L LEADING EDGE 15383-117C

DOB: **02-10-2015** RAAA#: **3483291**

BUF CRK THE RIGHT KIND U199  
**5L LEADING EDGE 1221-79A**  
 5L BLACKBIRD 5519-1221

5L PURSUIT 3244-127X  
**5L RED BIRD 411-15383**  
 5L RED BIRD 1312-411

BUF CRK LANGER R017  
 BUF CRK SHOSHONE R353

5L RED EDGE 743-30V  
 5L BLACKBIRD 1595-5519

N BAR SHADOW X4124  
 5L SILKWOOD 1148-3244

VOW KING OF THE WEST  
 NORSEMAN 1312 PJM

PERF. RATIO  
 BW **69** **99**  
 205 **683** **112**  
 WWT  
 365 **1269** **113**  
 YWT

HB	GM	CED	BW	WW	YW	ADG	MILK	ME	HPG	CEM	STAY	MARB	YG	CW	REA	FAT
80	37	18	-5.4	65	99	0.21	30	-2	14	11	16	0.5	0.09	27	0.13	0.02
10%	10%	8%	5%	43%	55%	66%	19%	20%	20%	7%	40%	35%	57%	40%	48%	53%

## 5L LEADING EDGE 15383-117C



## RED FLYING K ESCALADE 203F

DOB: **03-08-2018** RAAA#: **4205050**

RED TR ESCALADE 318T  
**RED JRA ESCALADE 76A**  
 RED SHODEREE DUCHESS 88R

TONGUE RIVER JESSE AT385  
**RED FLYING K CHARITY 73C**  
 RED FLYING K LINETT 201A

RED 5L NORSEMAN KING 2291  
 CFCC 6K

RED SSS STORM 87M  
 WSS DUCHESS 0315

RED TR JULIAN XT001  
 RED TR BRANDY XT059

RED ML MAX 862U  
 RED FLYING K TAMMY 6W

PERF. RATIO  
 BW **85** **106**  
 205 **682** **103**  
 WWT  
 365 **1069** **100**  
 YWT

HB	GM	CED	BW	WW	YW	ADG	MILK	ME	HPG	CEM	STAY	MARB	YG	CW	REA	FAT
69	15	11	-0.7	57	81	0.15	23	-5	12	1	21	0.53	-0.06	-6	0.11	0.01
21%	21%	75%	68%	69%	84%	93%	73%	13%	49%	99%	2%	30%	8%	99%	52%	34%







**LOT 1A 140 COMMERCIAL RED ANGUS BRED HEIFERS**  
This may be the best set of bred heifers we have ever had to offer. These beautiful bred heifers are coming right off the top of our replacement program and are to calve April 1<sup>st</sup> for 30 days. If you are looking for fertile females, take a look here. These heifers are bred to low birth weight, Sandhill Red Angus bulls. These heifers will raise a great set of calves for years to come.







Dam SRJJ ROCKET B67



B67 son by Fortunate Son 382F



B67 son by Pacesetter 491



**LOT 1**

**1 SRJJ CUTTING EDGE 3194**

DOB: 04-09-2023 TATTOO: SRJJ 3194 RAAA#: 4864018

RED JENSEN CACTUS 2Z	RED JENSEN CACTUS SKY 25S	PERF.	RATIO
RED T-K CUTTING EDGE 127D	RED JENSEN IRASTONE 5521R	BW	87 103
RED D-BAR SOXRO 61W	RED U-2 DYNAMO 7021T	205 WWT	761 110
RED BRAND X05	RED D-BAR SOXRO 28S	365 YWT	1088 112
SRJJ ROCKET B67	LELAND RED DIRECTION 8348U		
SRJJ TRUE HOLLIDAY Z67	SRJJ BRANDY 5715		
	RED NORTHLINE TRUEBLOOD 341T		
	HLG MISS ROCKET 388		

HB	GM	CED	BW	WW	YW	ADG	MILK	ME	HPG	CEM	STAY	MARB	YG	CW	REA	FAT
47	25	9	1.2	64	108	0.28	31	2	12	6	14	0.16	-0.01	24	0.22	0
60%	77%	92%	94%	38%	28%	20%	10%	41%	45%	81%	57%	97%	15%	48%	32%	12%

Leading off the sale with what may be the best Cutting Edge son we have raised. 3194 has the same extra length and perfect front end as his sire. 3194 has the presence and look of a herd bull and has been a standout since day one. His dam B67 has a MPPA of 107 and has always passed on the extra rib shabe and capacity to all her calves.

**2 SRJJ CUTTING EDGE 3090**

DOB: 03-21-2023 TATTOO: SRJJ 3090 RAAA#: 4863884

RED JENSEN CACTUS 2Z	RED JENSEN CACTUS SKY 25S	PERF.	RATIO
RED T-K CUTTING EDGE 127D	RED JENSEN IRASTONE 5521R	BW	86 101
RED D-BAR SOXRO 61W	RED U-2 DYNAMO 7021T	205 WWT	722 104
RED T-K UNTAPPED 21Z	RED D-BAR SOXRO 28S	365 YWT	1112 114
SRJJ HOLLIDAY D59	RED BAR-E-L WARDEN 144W		
SRJJ TRUE HOLLIDAY Z59	RED HAMCO LAURA 5S		
	RED NORTHLINE TRUEBLOOD 341T		
	HLG MISS HOLLIDAY 579		

HB	GM	CED	BW	WW	YW	ADG	MILK	ME	HPG	CEM	STAY	MARB	YG	CW	REA	FAT
61	10	10	0.1	68	111	0.27	33	7	12	6	17	0.09	-0.03	22	0.26	0
30%	95%	88%	84%	25%	22%	22%	4%	70%	40%	79%	18%	99%	11%	58%	25%	15%

This will be the last set of Cutting Edge calves to sell as he died last winter. We thought it fitting to start the sale with two top end Cutting Edge calves. They exemplify what 127D did so well. Extra length and barrel is very evident in his calves. It is very hard to find cattle with as much performance as these first two lots while keeping a very traditional Red Angus look.



Grand Dam SRJJ TRUE HOLLIDAY Z59



Sire to LOT 1 & 2 RED T-K CUTTING EDGE 127D



Dam SRJJ HOLLIDAY D59



**LOT 2**





3	SRJJ BLUE COLLAR 3126															
	DOB: 03-26-2023				TATTOO: SRJJ 3126				RAAA#: 4863930							
RED U-2 RECKONING 149A				RED U-2 RECON 192Y				PERF.				RATIO				
RED U2 BLUE COLLAR 295E				RED U-2 ANEXA 271Y				BW				88 104				
RED U-2 ANEXA 439A				RED MINBURN COPENHAGEN 3Y				205				WWT 670 97				
JACOBSON WEIGHT OUT 6171				SL OUT IN FRONT 1701-457B				365				YWT 1028 106				
SRJJ GOLDENGIRL F37				JACOBSON HEIDI 2099				SRJJ JULIAN EQUAL W9037				MESSMER JULIAN 44N				
SRJJ JULIAN EQUAL W9037				HAMMEL NO EQUAL MA37				HB				GM				
44				23				10				0.3				
63				101				0.23				28				
0				7				7				15				
0.36				0.1				16				0.03				
0.03				65%				81%				83%				
86%				41%				44%				47%				
35%				30%				98%				60%				
49%				65%				66%				80%				
73%				75%												

4	SRJJ FORTUNATE SON 3166															
	DOB: 03-24-2023				TATTOO: SRJJ 3166				RAAA#: 4863978							
RED HOWE HESSTON 212C				RED U6 HESSTON 14Z				PERF.				RATIO				
RED U2 FORTUNATE SON 382F				RED HOWE MS ARAB 170X				BW				82 96				
RED U-2 ANEXA 271Y				RED HOWE MAGNUM 169W				205				WWT 716 103				
RED LWNBRG HARVESTOR 103C				RED U-2 ANEXA 333N				365				YWT 979 101				
SRJJ HEAVENLY F11				TED HARVESTOR 154A				SRJJ BRAND A151				RED BRAND X05				
SRJJ BRAND A151				RED TED MAGNUM 141Y				HB				GM				
28				24				8				1.6				
71				114				0.27				25				
7				9				4				14				
0.18				0.1				36				0.19				
0.02				89%				79%				94%				
96%				17%				18%				24%				
62%				71%				84%				93%				
66%				96%				69%				11%				
38%				51%												

The stoutest and soggiest Blue Collar we have ever raised. 3126 is as dark cherry red as they come. A maternally driven stud that will produce big broody cows with great udders. We've had many registered and commercial females out of 295E over the years and one thing you can expect is a perfect udder with plenty of milk. This cross with F37 will add a little more performance and bone to the Blue Collar cattle.

An exact replica of his sire, 3166 will be the bull we would like to use to replace Fortunate Son. We had the bad luck of losing 382F this last summer while he was breeding cows. 3166 should excel at producing long lasting, functional females. His dam goes back to the J115 cow that produced her last calve at the age of 16. If you are striving to produce consistent, long lasting females that still wean pounds then take a look.







**LOT 5**



**GRAND DAM SRJJ BEAUTY C3**



**GRAND SIRE RED T-K TEN SPEED 52F**

**5 SRJJ LEADING EDGE 3018**

DOB: 02-27-2023 TATTOO: SRJJ 3018 RAAA#: 4863810  
 5L LEADING EDGE 1221-79A BUF CRK THE RIGHT KIND U199  
 5L BLACKBIRD 5519-1221 PERF. RATIO  
**5L LEADING EDGE 15383-117C** BW **67** **92**  
 5L RED BIRD 411-15383 5L PURSUIT 3244-127X  
 5L RED BIRD 1312-411 205 WWT **688** **100**  
 RED T-K TEN SPEED 52F RED GLESBAR CAPONE 23B  
 SRJJ BEAUTY J3 RED ANCHOR 1 MISS RIB 6Y  
 365 YWT **1197** **117**  
 SRJJ BEAUTY C3 RED T-K UNTAPPED 21Z  
 5L BEAUTY 1606-1328

HB	GM	CED	BW	WW	YW	ADG	MILK	ME	HPG	CEM	STAY	MARB	YG	CW	REA	FAT
71	33	12	-1.6	68	106	0.24	25	1	13	7	17	0.4	0.01	24	0.26	0.01
15%	63%	60%	56%	24%	32%	44%	59%	39%	20%	57%	25%	54%	23%	51%	25%	39%

What a stud. 3018 has had that herd bull look since the day he came out of the calving barn. He has a striking presence about him. A sure shot heifer bull that still has some performance and structure is a difficult thing to find. Not to mention that he stands down on an almost perfect foot and leg. We believe in the cow family behind 3018 and therefore we plan on using him very hard in our registered and commercial programs.



**5L LEADING EDGE 15383-117C**





RED LWNBRG SLOWBURN 102H



RED U2 KID ROCK 365F



RED LWNBRG HARVESTOR 103C

6

**SRJJ SLOWBURN 3067**

DOB: 03-05-2023 TATTOO: SRJJ 3067 RAAA#: 4863860

RED U2 DOMINION	RED HOWE HESSTON 212C	PERF.	RATIO
RED LWNBRG SLOWBURN 102H	RED U2 HIDEE HO 458D	BW	68 92
RED U2 FAVORITE 275F	RED U-2 RENOWN 193C	205 WWT	720 105
RED U2 KID ROCK 365F	RED U-2 FOREIGNER 413B	365 YWT	1015 99
SRJJ TASSEL J066	RED LWNBRG HARVESTOR 103C		
SRJJ TASSEL G066	SRJJ RIDIN RED 268		

HB	GM	CED	BW	WW	YW	ADG	MILK	ME	HPG	CEM	STAY	MARB	YG	CW	REA	FAT
33	3	10	1.1	73	110	0.23	25	3	9	4	14	0.13	0.01	26	0.25	0.01
83%	98%	81%	93%	11%	25%	52%	57%	50%	86%	94%	62%	98%	21%	39%	27%	23%

The time has finally come. The First Slowburn 102H calves to sell in the US. Everywhere he has been used in Canada his sons have topped their respected sales. We are always striving to improve feet and leg structure and keep performance in our cattle. This is why we partnered on 102H with Leeuwenburgh Angus. We led off the Slowburns with this 3067 because he exemplifies what Slowburn does so well, and adds the extra base width that we like to see. 3067 is a very complete calf and is very hard to fault.

Heifer Bull



**LOT 6**



Grand Sire RED U2 KID ROCK 365F



We bought 8403U in 2008 from Leland Red Angus, 8403U started our Tassel cow family. Tassel cows are long spined, deep ribbed, and produce offspring that push the sale down.





Dam Sire RED U2 BLUE COLLAR 295E



LOT 7

7	<b>SRJJ SLOWBURN 3068</b>															
	DOB: 03-09-2023				TATTOO: SRJJ 3068				RAAA#: 4863862							
	RED U2 DOMINION				RED HOWE HESSTON 212C RED U2 HIDEE HO 459D				PERF.				RATIO			
	<b>RED LWNBRG SLOWBURN 102H</b>				RED U-2 RENOWN 193C RED KBJ FAVORITE 931B				BW <b>76</b>				104			
RED U2 FAVORITE 275F								205				103				
RED U2 BLUE COLLAR 295E				RED U-2 RECKONING 149A RED U-2 ANEXA 439A				365				1077				
<b>SRJJ BOTEET J74</b>				YGVW GAME PLAN 508 PIE BOTEET 742				YWT				106				
SRJJ BOTEET G-PLAN Z74																
HB	GM	CED	BW	WW	YW	ADG	MILK	ME	HPG	CEM	STAY	MARB	YG	CW	REA	FAT
28	15	9	1.1	68	104	0.23	27	2	8	4	13	0.28	0.02	19	0.17	0.01
89%	90%	90%	93%	25%	37%	53%	38%	43%	95%	93%	71%	83%	26%	71%	43%	39%

Slowburn is becoming known more and more as an absolute must use if you are wanting to improve leg and foot structure. The last of his semen to sell fetched \$575 a straw. If you are wanting a 102H son that has a little more frame and performance, then 3068 is it. One of the heaviest weaning bulls in the pen, 3068 will add pounds to your calf crop.

8	<b>SRJJ FALCON 3026</b>															
	DOB: 03-10-2023				TATTOO: SRJJ 3026				RAAA#: 4863816							
	JACOBSON WEIGHT OUT 6171				5L OUT IN FRONT 1701-457B JACOBSON HEIDI 2099				PERF.				RATIO			
	<b>SRJJ FALCON 8087</b>				LELAND RED DIRECTION 8348U HAMMEL FOUNDATION P65				BW <b>75</b>				102			
RED FOUN Y65								205				96				
SRJJ GUNNER 9130				RED LWNBRG HARVESTOR 103C SRJJ PRINCESS B16				365				1160				
<b>SRJJ FOUNDATION J165</b>				CRUMP PACESETTER 491 SRJJ FOUNDATION B285				YWT				114				
SRJJ FOUNDATION D465																
HB	GM	CED	BW	WW	YW	ADG	MILK	ME	HPG	CEM	STAY	MARB	YG	CW	REA	FAT
56	28	11	0.2	66	105	0.24	24	10	10	8	17	0.49	0.1	18	0.05	0.03
41%	72%	78%	86%	30%	35%	43%	65%	85%	83%	30%	26%	34%	71%	72%	69%	77%

We keep going back into the semen tank and using 8087. We flushed some cows last year and 8087 was a sire we used a bunch. 3026 is extra wide based, with loads of muscle expression. If you are wanting a heifer bull that will add-extra length and frame 3026 is the bull. HEIFER BULL



Sire SRJJ FALCON 8087



Dam of Falcon SRJJ PRINCESS B16



Dam of Gunner RED FOUN Y65



LOT 8



**9****SRJJ FIRST FUEL 3089**

DOB: 03-21-2023

TATTOO: SRJJ 3089

RAAA#: 4863882

RED BAR-E-L FIRST DOWN 161D

RED CROWFOOT 4ACES 2193Z

PERF. RATIO

DVO RIGHT OF FIRST REFUSAL

RED BAR-E-L GLORIA 87R

BW 65 81

DVO PRINCENE

XO CROWFOOT 0102X

205 664 96

CROWFOOT PRINCENE 6009S

RED U2 FORTUNATE SON 382F

RED HOWE HESSTON 212C

365 981 101

SRJJ PRINCESS 9259 H116

RED U2 ANEXA 271Y

SRJJ PRINCESS B16

PIE CODE RED 199

SRJJ RED LANCER Z16

HB	GM	CED	BW	WW	YW	ADG	MILK	ME	HPG	CEM	STAY	MARB	YG	CW	REA	FAT
62	18	12	-0.7	63	104	0.26	25	5	12	7	17	0.14	0.03	20	0.23	0.02
29%	88%	64%	73%	43%	36%	29%	57%	62%	32%	60%	25%	98%	28%	67%	30%	57%

Moderate framed heifer bull that looks just like his three quarter brother lot 45 from last year. Very typy with loads of breed character.  
**HEIFER BULL**



SRJJ FIRST DOWN 2010 a Maternal Brother to Lot 9 that sold in our 2023 Sale to Jeremy Tihista

**10****SRJJ FIRST FUEL 3980**

DOB: 05-07-2023

TATTOO: SRJJ 3980

RAAA#: 4864092

RED BAR-E-L FIRST DOWN 161D

RED CROWFOOT 4ACES 2193Z

PERF. RATIO

DVO RIGHT OF FIRST REFUSAL

RED BAR-E-L GLORIA 87R

BW 88 104

DVO PRINCENE

XO CROWFOOT 0102X

205 791 114

CROWFOOT PRINCENE 6009S

9 MILE FRANCHISE 6305

SPUR FRANCHISE OF GARTON

365 1175 121

SRJJ RAMBO G42

C-BAR ABIGRAICE Y11

RED T-K MISS RAMBO 47E

RED YCLC MAMA'S BOY 558R

RED T-K MISS RAMBO 69C

HB	GM	CED	BW	WW	YW	ADG	MILK	ME	HPG	CEM	STAY	MARB	YG	CW	REA	FAT
64	29	10	0.9	74	120	0.29	27	-2	11	6	15	0.24	0.05	26	0.29	0.03
25%	70%	84%	92%	10%	11%	14%	39%	25%	50%	64%	42%	90%	38%	42%	20%	69%



69C



47E

**LOT 9****11****SRJJ FIRST FUEL 3193**

DOB: 04-09-2023

TATTOO: SRJJ 3193

RAAA#: 4864016

RED BAR-E-L FIRST DOWN 161D

RED CROWFOOT 4ACES 2193Z

PERF. RATIO

DVO RIGHT OF FIRST REFUSAL

RED BAR-E-L GLORIA 87R

BW 72 89

DVO PRINCENE

XO CROWFOOT 0102X

205 726 105

CROWFOOT PRINCENE 6009S

RED T-K CUTTING EDGE 127D

RED JENSEN CACTUS 2Z

365 1020 105

SRJJ DIANA 8290 H087

RED D-BAR SOXRO 61W

SRJJ BRAND DYNA A87

RED BRAND X05

HUST DYNA Y78

HB	GM	CED	BW	WW	YW	ADG	MILK	ME	HPG	CEM	STAY	MARB	YG	CW	REA	FAT
60	22	12	-0.6	62	104	0.26	27	0	13	6	16	0.16	0.05	18	0.12	0.02
32%	82%	68%	74%	46%	37%	28%	42%	30%	20%	79%	39%	97%	37%	75%	54%	48%

**HEIFER BULL**

X05



Y78

**LOT 10****12****SRJJ FIRST FUEL 3245**

DOB: 04-28-2023

TATTOO: SRJJ 3245

RAAA#: 4864072

RED BAR-E-L FIRST DOWN 161D

RED CROWFOOT 4ACES 2193Z

PERF. RATIO

DVO RIGHT OF FIRST REFUSAL

RED BAR-E-L GLORIA 87R

BW 77

DVO PRINCENE

XO CROWFOOT 0102X

205 729

CROWFOOT PRINCENE 6009S

RED T-K UNTAPPED 21Z

RED BAR-E-L WARREN 144W

365 937

SRJJ CALYPSO C04

RED HAMCO LAURA 5S

HUST CALYPSO Y04

HUST CHIEF SEQUOYA R336

EF CALYPSO C01

HB	GM	CED	BW	WW	YW	ADG	MILK	ME	HPG	CEM	STAY	MARB	YG	CW	REA	FAT
60	7	11	-0.4	65	103	0.23	22	-2	13	5	16	0.13	0.04	14	0.1	0.02
32%	96%	76%	78%	33%	39%	47%	83%	23%	28%	90%	37%	98%	36%	85%	58%	55%

**HEIFER BULL**

C04

**LOT 12**





Sire RED LWNBRG SLOWBURN 102H

**13** **SRJJ SLOWBURN 3006**

DOB: 02-21-2023 TATTOO: SRJJ 3006 RAAA#: 4863792

RED U2 DOMINION  
 RED LWNBRG SLOWBURN 102H  
 RED U2 FAVORITE 275F

RED T-K CUTTING EDGE 127D  
 SRJJ ABIGRACE J084  
 SRJJ JASMINE E284

PERF.	RATIO
68	94
205 WWT	656
365 YWT	1009

HB	GM	CED	BW	WW	YW	ADG	MILK	ME	HPG	CEM	STAY	MARB	YG	CW	REA	FAT
24	19	10	0.5	70	115	0.28	23	6	9	4	14	0.14	-0.01	28	0.28	0
92%	86%	87%	89%	20%	17%	16%	76%	65%	92%	95%	66%	98%	16%	33%	22%	16%

**14** **SRJJ SLOWBURN 3053**

DOB: 02-24-2023 TATTOO: SRJJ 3053 RAAA#: 4863840

RED U2 DOMINION  
 RED LWNBRG SLOWBURN 102H  
 RED U2 FAVORITE 275F

RED T-K CUTTING EDGE 127D  
 SRJJ ROMEA J147  
 SRJJ ROMEA E47

PERF.	RATIO
72	99
205 WWT	691
365 YWT	966

HB	GM	CED	BW	WW	YW	ADG	MILK	ME	HPG	CEM	STAY	MARB	YG	CW	REA	FAT
23	11	10	0.3	66	102	0.23	30	4	9	4	12	0.17	-0.02	20	0.23	0
93%	94%	83%	86%	32%	41%	52%	17%	55%	84%	93%	77%	96%	12%	66%	30%	18%

HEIFER BULL



E284 AS A YEARLING

HEIFER BULL



Maternal Sire RED T-K CUTTING EDGE 127D



LOT 14



**15****SRJJ LEADING EDGE 3012**

DOB: 02-20-2023 TATTOO: SRJJ 3012 RAAA#: 4863802

5L LEADING EDGE 1221-79A		PERF.		RATIO	
5L LEADING EDGE 15383-117C		BW	69	95	
5L RED BIRD 411-15383					
PIE CINCH 715		205	694	101	
SRJJ ROBBER J148		365	1002	98	
SRJJ GOLD C148					

HB	GM	CED	BW	WW	YW	ADG	MILK	ME	HPG	CEM	STAY	MARB	YG	CW	REA	FAT
69	27	13	-2.5	64	94	0.19	28	1	13	7	16	0.42	0.09	23	0.1	0.03
18%	74%	47%	38%	40%	59%	76%	31%	36%	19%	45%	33%	49%	65%	55%	58%	68%

**HEIFER BULL**

PIE CINCH 715



SRJJ ROMEO 9137 out of C148



Sire 5L LEADING EDGE 15383-117C

**16****SRJJ LEADING EDGE 3017**

DOB: 02-26-2023 TATTOO: SRJJ 3017 RAAA#: 4863808

5L LEADING EDGE 1221-79A		PERF.		RATIO	
5L LEADING EDGE 15383-117C		BW	79	107	
5L RED BIRD 411-15383					
SRJJ MAVERICK 9046		205	724	106	
SRJJ FOUNDATION J065		365	1077	106	
SRJJ FOUNDATION D265					

HB	GM	CED	BW	WW	YW	ADG	MILK	ME	HPG	CEM	STAY	MARB	YG	CW	REA	FAT
61	37	12	-0.6	78	121	0.27	26	7	12	7	16	0.48	0.16	35	0.06	0.03
32%	54%	64%	74%	5%	10%	25%	45%	72%	43%	42%	38%	36%	92%	13%	67%	71%

**HEIFER BULL**

CRUMP PACESETTER 491



SRJJ MAVERICK 9046

**LOT 15****17****SRJJ LEADING EDGE 3061**

DOB: 03-03-2023 TATTOO: SRJJ 3061 RAAA#: 4863848

5L LEADING EDGE 1221-79A		PERF.		RATIO	
5L LEADING EDGE 15383-117C		BW	96	128	
5L RED BIRD 411-15383					
SRJJ GUNNER 9130		205	670	98	
SRJJ REBELLA J241		365	1101	108	
SRJJ RIDIN RED Z41					

HB	GM	CED	BW	WW	YW	ADG	MILK	ME	HPG	CEM	STAY	MARB	YG	CW	REA	FAT
70	41	9	2.7	74	122	0.3	24	7	13	7	17	0.44	0.11	31	0.12	0.02
16%	44%	89%	99%	10%	9%	10%	70%	69%	27%	57%	19%	45%	74%	23%	54%	59%



SRJJ GUNNER 9130



SRJJ RIDIN RED Z41

**LOT 17****18****SRJJ LEADING EDGE 3051**

DOB: 02-27-2023 TATTOO: SRJJ 3051 RAAA#: 4863838

5L LEADING EDGE 1221-79A		PERF.		RATIO	
5L LEADING EDGE 15383-117C		BW	60	84	
5L RED BIRD 411-15383					
PIE CINCH 715		205	707	103	
SRJJ DOROTHY J8		365	950	93	
SRJJ DOROTHY B8					

HB	GM	CED	BW	WW	YW	ADG	MILK	ME	HPG	CEM	STAY	MARB	YG	CW	REA	FAT
66	29	13	-3.2	63	94	0.19	28	-3	13	7	15	0.45	0.07	21	0.15	0.03
22%	70%	47%	26%	41%	59%	76%	32%	23%	23%	42%	46%	42%	54%	61%	47%	68%

**HEIFER BULL**

SRJJ DOROTHY B8



RED BRAND X05





Sire **SRJJ HIGH TIME 0024**



Grand Dam **936 ECHO 2526 Y26**



Grand Sire **RED TER-RON PARKER 34A**

**19**

**SRJJ HIGH TIME 3092**

DOB: **03-22-2023** TATTOO: **SRJJ 3092** RAAA#: **4863888**

RED TER-RON PARKER 34A  
**SRJJ HIGH TIME 0024**  
 936 ECHO 2526

TER-RON PARK PLACE 18Y  
 RED TER-RON DIAMOND MIST 164

PERF. RATIO  
**99 116**

LARSON THUNDEBIRD 936  
 ECHO 091 2526

BW  
**742 107**

205  
 WWT

365  
 YWT

CRUMP PACESETTER 491  
**SRJJ MAJESTIC F032**  
 SRJJ MAJESTIC C32

SL MTN SIGN 435-10Z  
 MDM VERNICE 1020

RED T-K UNTAPPED 21Z  
 BCRP MS MAJESTIC 123Y

HB	GM	CED	BW	WW	YW	ADG	MILK	ME	HPG	CEM	STAY	MARB	YG	CW	REA	FAT
15	29	6	2.8	80	129	0.31	20	7	10	2	12	0.25	0.04	34	0.35	0.02
97%	70%	98%	99%	3%	4%	7%	91%	73%	78%	99%	80%	88%	33%	15%	13%	45%



**LOT 19 three weeks old**

One of the best High Time calves to date. 3092 has had that herd bull look and was a standout all summer. With more performance, frame and muscle shape than his sire 3092 is sure to add pounds to any calf crop. His dam is a beautiful young cow that has never missed and has a 366 calving interful.



**LOT 19**



**20****SRJJ HIGH TIME 3030**

DOB: 03-14-2023 TATTOO: SRJJ 3030 RAAA#: 4863824

RED TER-RON PARKER 34A

TER-RON PARK PLACE 18Y

PERF. RATIO

**SRJJ HIGH TIME 0024**

RED TER-RON DIAMOND MIST 164

BW **87** **102**

936 ECHO 2526

LARSON THUNDEBIRD 936

205 **703** **102**

RED LWNBRG HARVESTOR 103C

TED HARVESTOR 154A

365 **989** **102****SRJJ FOUNDATION E165**

RED TED MAGNUM 141Y

SRJJ FOUNDATION B65

LELAND RED DIRECTION 8348U

HB	GM	CED	BW	WW	YW	ADG	MILK	ME	HPG	CEM	STAY	MARB	YG	CW	REA	FAT
31	24	8	1.1	75	120	0.28	20	10	10	3	15	0.24	0.02	32	0.29	0
86%	80%	96%	93%	8%	11%	19%	92%	85%	74%	97%	53%	90%	24%	19%	20%	23%

**LOT 20****RED LWNBRG HARVESTOR 103C****SRJJ CUTTING EDGE 1164 Maternal Brother to Lot 20****21****SRJJ HIGH TIME 3088**

DOB: 03-21-2023 TATTOO: SRJJ 3088 RAAA#: 4863880

RED TER-RON PARKER 34A

TER-RON PARK PLACE 18Y

PERF. RATIO

**SRJJ HIGH TIME 0024**

RED TER-RON DIAMOND MIST 164

BW **71** **83**

936 ECHO 2526

LARSON THUNDEBIRD 936

205 **738** **107**

CRUMP RUNAWAY 3178

CRUMP 300 ULTRA MAGNUM Y106

365 **963** **99****SRJJ GUSTY C54**

BUF CRK PRIMROSE U021

PIE GUSTY 0354

VOW GAME PLAN 508

HB	GM	CED	BW	WW	YW	ADG	MILK	ME	HPG	CEM	STAY	MARB	YG	CW	REA	FAT
45	28	14	-2	73	114	0.26	24	5	11	6	15	0.33	-0.01	26	0.26	0
64%	71%	39%	48%	12%	18%	31%	67%	63%	59%	78%	51%	72%	15%	42%	25%	15%

**LOT 21****Lot 21's Maternal Brother - We kept for purebred Breeding****22****SRJJ HIGH TIME 3084**

DOB: 03-17-2023 TATTOO: SRJJ 3084 RAAA#: 4863874

RED TER-RON PARKER 34A

TER-RON PARK PLACE 18Y

PERF. RATIO

**SRJJ HIGH TIME 0024**

RED TER-RON DIAMOND MIST 164

BW **84** **100**

936 ECHO 2526

LARSON THUNDEBIRD 936

205 **656** **95**

CRUMP RUNAWAY 3178

CRUMP 300 ULTRA MAGNUM Y106

365 **975** **100****SRJJ ANASCO F101**

BUF CRK PRIMROSE U021

SRJJ BRAND ANASCO A01

RED BRAND X05

HB	GM	CED	BW	WW	YW	ADG	MILK	ME	HPG	CEM	STAY	MARB	YG	CW	REA	FAT
38	24	10	0.4	66	103	0.23	22	0	12	4	14	0.32	-0.01	22	0.22	0
76%	79%	82%	88%	31%	40%	51%	84%	35%	40%	97%	64%	74%	15%	59%	32%	19%

**LOT 22****CRUMP RUNAWAY 3178****BUF CRK PRIMROSE U021**





Sire RED U2 BLUE COLLAR 295E

**23**

**SRJJ BLUE COLLAR 3117**

DOB: 03-26-2023 TATTOO: SRJJ 3117 RAAA#: 4863920

RED U-2 RECKONING 149A  
 RED U-2 ANEXA 439A  
 JACOBSON WEIGHT OUT 6171  
 SRJJ BEAUTY F3  
 5L BEAUTY 1606-1328

RED U-2 RECON 192Y  
 RED U-2 ANEXA 271Y  
 PERF. RATIO  
 BW 86 102  
 205 WWT 703 102  
 365 YWT 1035 107

RED MINBURN COPENHAGEN 3Y  
 RED U-2 ANEXA 443Y  
 SL OUT IN FRONT 1701-457B  
 JACOBSON HEIDI 2099  
 SL TRAVLIN EXPRESS 1892-6295  
 SL BEAUTY 038-1606

HB	GM	CED	BW	WW	YW	ADG	MILK	ME	HPG	CEM	STAY	MARB	YG	CW	REA	FAT
50	35	10	0.8	70	111	0.26	27	2	9	7	15	0.43	0.06	24	0.21	0.03
52%	57%	85%	91%	20%	23%	30%	43%	44%	88%	58%	46%	47%	48%	48%	34%	66%



**LOT 23**



3117 three weeks old



JACOBSON WEIGHT OUT 6171





**24****SRJJ BLUE COLLAR 3038**

DOB: 03-16-2023 TATTOO: SRJJ 3038 RAAA#: 4863828

RED U-2 RECKONING 149A  
**RED U2 BLUE COLLAR 295E**  
 RED U-2 ANEXA 439A

PERF. RATIO  
 BW **86** **102**

205  
 WWT **624** **90**

365  
 YWT **883** **91**

PIE CODE RED 199  
**SRJJ PRINCESS B16**  
 SRJJ RED LANCER Z16

RED U-2 RECON 192Y  
 RED U-2 ANEXA 271Y

RED MINBURN COPENHAGEN 3Y  
 RED U-2 ANEXA 443Y

PIE CODE RED 8058  
 PERKS MONA B10U

LELAND RED DIRECTION 8348U  
 BUF CRK PRINCESS T216

HB	GM	CED	BW	WW	YW	ADG	MILK	ME	HPG	CEM	STAY	MARB	YG	CW	REA	FAT
65	24	9	1.1	61	100	0.25	32	8	10	8	18	0.36	0.04	17	0.17	0.02
23%	80%	90%	93%	50%	45%	39%	8%	76%	82%	28%	11%	65%	34%	77%	43%	59%

**25****SRJJ BLUE COLLAR 3144**

DOB: 03-28-2023 TATTOO: SRJJ 3144 RAAA#: 4863948

RED U-2 RECKONING 149A  
**RED U2 BLUE COLLAR 295E**  
 RED U-2 ANEXA 439A

PERF. RATIO  
 BW **88** **103**

205  
 WWT **696** **101**

365  
 YWT **1048** **108**

9 MILE FRANCHISE 6305  
**SRJJ FIRELADY F034**  
 SRJJ FIRELADY C34

RED U-2 RECON 192Y  
 RED U-2 ANEXA 271Y

RED MINBURN COPENHAGEN 3Y  
 RED U-2 ANEXA 443Y

SPUR FRANCHISE OF GARTON  
 C-BAR ABIGRAE Y11

CRUMP RUNAWAY 3178  
 SRJJ BRAND M CANYON A134

HB	GM	CED	BW	WW	YW	ADG	MILK	ME	HPG	CEM	STAY	MARB	YG	CW	REA	FAT
57	34	11	-0.5	68	108	0.25	30	-2	7	8	15	0.4	0.03	26	0.32	0.03
39%	60%	73%	76%	25%	29%	35%	16%	25%	97%	36%	41%	54%	31%	39%	16%	64%

**26****SRJJ BLUE COLLAR 3182**

DOB: 05-05-2023 TATTOO: SRJJ 3182 RAAA#: 4864004

RED U-2 RECKONING 149A  
**RED U2 BLUE COLLAR 295E**  
 RED U-2 ANEXA 439A

PERF. RATIO  
 BW **87** **102**

205  
 WWT **776** **112**

365  
 YWT **1082** **111**

RED LWNBRG HARVESTOR 103C  
**SRJJ ROCKET F67**  
 SRJJ ROCKET B67

RED U-2 RECON 192Y  
 RED U-2 ANEXA 271Y

RED MINBURN COPENHAGEN 3Y  
 RED U-2 ANEXA 443Y

TED HARVESTOR 154A  
 RED TED MAGNUM 141Y

RED BRAND X05  
 SRJJ TRUE ROCKET Z67

HB	GM	CED	BW	WW	YW	ADG	MILK	ME	HPG	CEM	STAY	MARB	YG	CW	REA	FAT
32	31	8	1.8	75	121	0.29	26	1	7	6	13	0.3	0.11	34	0.14	0.02
85%	67%	95%	97%	9%	10%	14%	45%	38%	98%	79%	72%	79%	74%	15%	49%	57%

**27****SRJJ BLUE COLLAR 3223**

DOB: 04-16-2023 TATTOO: SRJJ 3223 RAAA#: 4864048

RED U-2 RECKONING 149A  
**RED U2 BLUE COLLAR 295E**  
 RED U-2 ANEXA 439A

PERF. RATIO  
 BW **97** **114**

205  
 WWT **866** **125**

365  
 YWT **1202** **124**

CRUMP RUNAWAY 3178  
**SRJJ REBELLA E241**  
 SRJJ RIDIN RED Z41

RED U-2 RECON 192Y  
 RED U-2 ANEXA 271Y

RED MINBURN COPENHAGEN 3Y  
 RED U-2 ANEXA 443Y

CRUMP 303 ULTRA MAGNUM Y106  
 BUF CRK PRIMROSE U021

BAR M RIDIN RED 0207  
 RED R HOOD X41

HB	GM	CED	BW	WW	YW	ADG	MILK	ME	HPG	CEM	STAY	MARB	YG	CW	REA	FAT
69	35	10	1.9	81	126	0.28	29	0	8	7	17	0.4	0.04	27	0.26	0.02
18%	58%	85%	97%	3%	5%	17%	24%	30%	94%	60%	18%	54%	32%	38%	25%	48%







SRJJ FALCON 8087

28

**SRJJ FALCON 3003**

DOB: 02-19-2023 TATTOO: SRJJ 3003 RAAA#: 4863790

JACOBSON WEIGHT OUT 6171

5L OUT IN FRONT 1701-457B

PERF. RATIO

SRJJ FALCON 8087

JACOBSON HEIDI 2099

BW 64 89

RED FOUN Y65

LELAND RED DIRECTION 8348U

205 623 91

RED U2 BLUE COLLAR 295E

RED U-2 RECKONING 149A

365 775 76

SRJJ PRINCESS J16

RED U-2 ANEXA 439A

SRJJ RED PRINCESS A16

LELAND RED DIRECTION 8348U

BUF CRK PRINCESS T216

HB	GM	CED	BW	WW	YW	ADG	MILK	ME	HPG	CEM	STAY	MARB	YG	CW	REA	FAT
67	25	12	-2.1	55	85	0.19	26	-1	9	9	17	0.47	0.06	11	0.07	0.03
20%	78%	59%	45%	73%	76%	77%	52%	28%	86%	16%	25%	38%	47%	90%	65%	71%

HEIFER BULL



Sire of 8087 JACOBSON WEIGHT OUT 6171



Sire of Lot 29's Dam J290 RED U2 KID ROCK 365F



Dam of 8087 RED FOUN Y65

29

**SRJJ FALCON 3066**

DOB: 03-04-2023 TATTOO: SRJJ 3066 RAAA#: 4863858

JACOBSON WEIGHT OUT 6171

5L OUT IN FRONT 1701-457B

PERF. RATIO

SRJJ FALCON 8087

JACOBSON HEIDI 2099

BW 74 101

RED FOUN Y65

LELAND RED DIRECTION 8348U

205 660 96

RED U2 KID ROCK 365F

RED U-2 FOREIGNER 413B

365 938 92

SRJJ LARKABA J290

RED U-2 SYRINGA 135B

SRJJ LARKABA G90

SRJJ VISION 7023

SRJJ LARKABA 494 0100

HB	GM	CED	BW	WW	YW	ADG	MILK	ME	HPG	CEM	STAY	MARB	YG	CW	REA	FAT
67		12	-0.2	63	91	0.17	27	1	11	8	17					
21%	%	62%	80%	42%	65%	84%	43%	38%	60%	40%	25%	%	%	%	%	%

HEIFER BULL

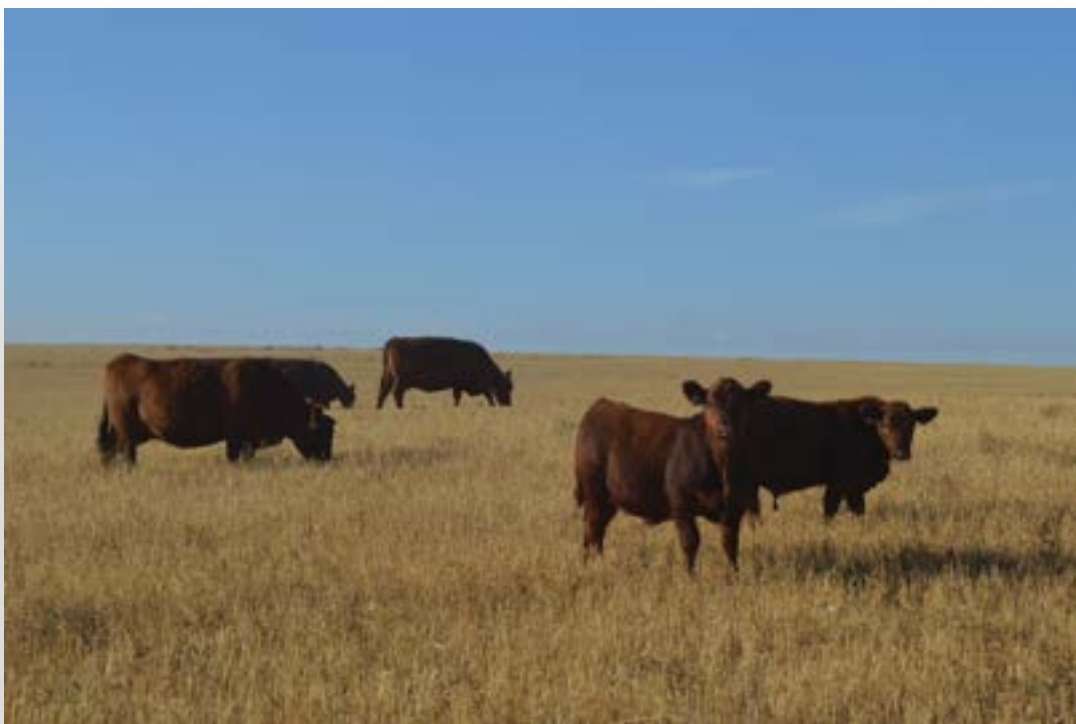


MATERNAL GGRAND DAM SRJJ LARKABA D190



LOT 29





**30**

**SRJJ ESCALADE 3236**

DOB: **04-20-2023** TATTOO: **SRJJ 3236** RAAA#: **4864058**

RED JRA ESCALADE 76A  
**RED GLYING K ESCALADE 203F**  
 RED FLYING K CHARITY 73C

RED T-K CUTTING EDGE 127D  
**SRJJ VANESSA 9218 H096**  
 SRJJ VANESSA C96

RED TR ESCALADE 318T  
 RED SHODEREE DUCHESS 88R

TONGUE RIVER JESSE AT385  
 RED FLYING K LINETT 201A

RED JENSEN CACTUS 2Z  
 RED D-BAR SOXRO 61W

RED T-K UNTAPPED 21Z  
 SL VANESSA 814K-426

PERF. RATIO  
 BW **75** **92**  
 205 WWT **741** **107**  
 365 YWT **956** **98**

HB	GM	CED	BW	WW	YW	ADG	MILK	ME	HPG	CEM	STAY	MARB	YG	CW	REA	FAT
67	21	12	-1.9	58	88	0.19	26	-1	12	4	19	0.37	-0.08	6	0.24	0
21%	84%	60%	50%	62%	70%	76%	48%	28%	41%	94%	7%	63%	4%	96%	29%	23%

**HEIFER BULL**



**31**

**SRJJ ESCALADE 3202**

DOB: **04-10-2023** TATTOO: **SRJJ 3202** RAAA#: **4864026**

RED JRA ESCALADE 76A  
**RED GLYING K ESCALADE 203F**  
 RED FLYING K CHARITY 73C

RED T-K CUTTING EDGE 127D  
**SRJJ GUSTY 9255 H054**  
 SRJJ GUSTY E254

RED TR ESCALADE 318T  
 RED SHODEREE DUCHESS 88R

TONGUE RIVER JESSE AT385  
 RED FLYING K LINETT 201A

RED JENSEN CACTUS 2Z  
 RED D-BAR SOXRO 61W

BAR M PALADIN 4001  
 SRJJ GUSTY C54

PERF. RATIO  
 BW **78** **96**  
 205 WWT **731** **106**  
 365 YWT **1026** **106**

HB	GM	CED	BW	WW	YW	ADG	MILK	ME	HPG	CEM	STAY	MARB	YG	CW	REA	FAT
67		12	-1.3	62	94	0.2	29	-2	11	4	19					
21%	%	64%	61%	48%	60%	71%	24%	26%	48%	95%	9%	%	%	%	%	%

**HEIFER BULL**



**32**

**SRJJ ESCALADE 3039**

DOB: **03-16-2023** TATTOO: **SRJJ 3039** RAAA#: **4863830**

RED JRA ESCALADE 76A  
**RED GLYING K ESCALADE 203F**  
 RED FLYING K CHARITY 73C

9 MILE FRANCHISE 6305  
**SRJJ ECHO 8223 HT426**  
 936 ECHO 2526

RED TR ESCALADE 318T  
 RED SHODEREE DUCHESS 88R

TONGUE RIVER JESSE AT385  
 RED FLYING K LINETT 201A

SPUR FRANCHISE OF GARTON  
 C-BAR ABRIGRACE Y11

LARSON THUNDERBIRD 936  
 ECHO 091 2526

PERF. RATIO  
 BW **60** **75**  
 205 WWT **615** **89**  
 365 YWT **922** **95**

HB	GM	CED	BW	WW	YW	ADG	MILK	ME	HPG	CEM	STAY	MARB	YG	CW	REA	FAT
65	29	15	-4.8	51	80	0.18	26	-1	11	6	18	0.46	-0.01	11	0.23	0.02
24%	70%	19%	8%	82%	83%	81%	50%	29%	62%	69%	11%	40%	14%	90%	30%	51%

**HEIFER BULL**







RED T-K CUTTING EDGE 127D

**33**

**SRJJ CUTTING EDGE 3207**

DOB: 04-12-2023 TATTOO: SRJJ 3207 RAAA#: 4864032

RED JENSEN CACTUS 2Z  
RED T-K CUTTING EDGE 127D

RED JENSEN CACTUS SKY 25S  
RED JENSEN IRASTONE 5521R

PERF. RATIO  
BW 78 91

RED D-BAR SOXRO 61W

RED U-2 DYNAMO 7021T  
RED D-BAR SOXRO 28S

205 WWT 731 106

CRUMP RUNAWAY 3178

CRUMP 300 ULTRA MAGNUM Y106  
BUF CRK PRIMROSE U021

SRJJ FRANCES E80

365 YWT 965 99

DUNN ECHO 0804

LSF JBOB EXPECTATION 6034S  
ECHO FRANCES 2519

HB	GM	CED	BW	WW	YW	ADG	MILK	ME	HPG	CEM	STAY	MARB	YG	CW	REA	FAT
60	38	14	-2.2	63	103	0.25	31	3	11	8	16	0.4	-0.03	17	0.16	-0.01
32%	51%	29%	44%	44%	40%	36%	12%	48%	47%	28%	37%	54%	10%	77%	45%	8%

HEIFER BULL



Grand Sire CRUMP RUNAWAY 3178



**LOT 33**





**34** **SRJJ CUTTING EDGE 3128**  
 DOB: 03-23-2023 TATTOO: SRJJ 3128 RAAA#: 4863934  
 RED JENSEN CACTUS 2Z  
 RED T-K CUTTING EDGE 127D  
 RED D-BAR SOXRO 61W

RED JENSEN CACTUS SKY 25S  
 RED JENSEN IRASTONE 5521R

RED U-2 DYNAMO 7021T  
 RED D-BAR SOXRO 28S

SRJJ HARVESTOR 7093  
 SRJJ MARY G462  
 SRJJ MARY E262

RED LWNBRG HARVESTOR 103C  
 SRJJ BRAND DYNMA A87

BAR M PALADIN 4001  
 SRJJ LANCER C062

PERF. RATIO  
 BW 85 102  
 205 WWT 707 102  
 365 YWT 1066 110

HB	GM	CED	BW	WW	YW	ADG	MILK	ME	HPG	CEM	STAY	MARB	YG	CW	REA	FAT
38	32	10	0.2	66	110	0.28	30	6	11	6	14	0.23	0.04	26	0.14	0
75%	64%	82%	86%	32%	24%	18%	14%	63%	52%	74%	66%	91%	33%	39%	49%	21%

**36** **SRJJ CUTTING EDGE 3079**  
 DOB: 03-17-2023 TATTOO: SRJJ 3079 RAAA#: 4863868  
 RED JENSEN CACTUS 2Z  
 RED T-K CUTTING EDGE 127D  
 RED D-BAR SOXRO 61W

RED JENSEN CACTUS SKY 25S  
 RED JENSEN IRASTONE 5521R

RED U-2 DYNAMO 7021T  
 RED D-BAR SOXRO 28S

PIE CINCH 715  
 SRJJ FIRELADY G434  
 MR GRAND Y34

PIE CINCH 4126  
 PIE PLAYMATE 5253

BAR M MR MISSION 9024  
 SRJJ GRAND CANYON W134

PERF. RATIO  
 BW 79 95  
 205 WWT 634 92  
 365 YWT 863 89

HB	GM	CED	BW	WW	YW	ADG	MILK	ME	HPG	CEM	STAY	MARB	YG	CW	REA	FAT
51	11	-0.6	57	94	0.23	29	4	12	6	15						
52%	%	78%	74%	65%	59%	51%	22%	51%	45%	70%	41%	%	%	%	%	%

**35** **SRJJ CUTTING EDGE 3080**  
 DOB: 03-17-2023 TATTOO: SRJJ 3080 RAAA#: 4863870  
 RED JENSEN CACTUS 2Z  
 RED T-K CUTTING EDGE 127D  
 RED D-BAR SOXRO 61W

RED JENSEN CACTUS SKY 25S  
 RED JENSEN IRASTONE 5521R

RED U-2 DYNAMO 7021T  
 RED D-BAR SOXRO 28S

CRUMP RUNAWAY 3178  
 SRJJ LANCER F262  
 SRJJ LANCER B62

CRUMP 300 ULTRA MAGNUM Y106  
 BUF CRK PRIMROSE U021

RED BRAND X05  
 SRJJ SKY LANCER W269

PERF. RATIO  
 BW 61 73  
 205 WWT 647 94  
 365 YWT 908 93

HB	GM	CED	BW	WW	YW	ADG	MILK	ME	HPG	CEM	STAY	MARB	YG	CW	REA	FAT
62	17	-4.9	53	87	0.21	30	0	11	9	16						
29%	%	6%	7%	79%	73%	64%	16%	34%	53%	16%	31%	%	%	%	%	%

**37** **SRJJ CUTTING EDGE 3127**  
 DOB: 03-24-2023 TATTOO: SRJJ 3127 RAAA#: 4863932  
 RED JENSEN CACTUS 2Z  
 RED T-K CUTTING EDGE 127D  
 RED D-BAR SOXRO 61W

RED JENSEN CACTUS SKY 25S  
 RED JENSEN IRASTONE 5521R

RED U-2 DYNAMO 7021T  
 RED D-BAR SOXRO 28S

SRJJ VISION 7023  
 SRJJ LARKABA G90  
 SRJJ LARKABA D190

CRUMP RUNAWAY 3178  
 SRJJ JULIAN EQUAL W9037

RED T-K UNTAPPED 21Z  
 MR LARKABA Y901

PERF. RATIO  
 BW 72 87  
 205 WWT 650 94  
 365 YWT 874 90

HB	GM	CED	BW	WW	YW	ADG	MILK	ME	HPG	CEM	STAY	MARB	YG	CW	REA	FAT
56	13	-1.9	60	93	0.21	32	5	11	8	16						
41%	%	42%	50%	56%	61%	65%	8%	58%	63%	40%	33%	%	%	%	%	%







**PAYBACK**<sup>®</sup>

**Feed that supports healthy herds**

**Payback<sup>®</sup> feeds support productive, profitable livestock feeding programs.**

Our Payback Ultramin Elite™ mineral, Payback Bull Challenger and Payback Head Start feeds now contain the full feeding rate of Zinpro<sup>®</sup> Availa<sup>®</sup> 4, a combination of highly available zinc, copper, manganese and cobalt, which contributes to the overall health and reproductive performance of beef cattle.

**Payback<sup>®</sup> mineral benefits:**

**Heifers**

- Improved growth
- Improved ovulation
- Better conception rates

**Cows**

- Tighter calving intervals
- Improved conception rates

**Bulls**

- Earlier puberty
- Enhanced semen quality
- Improved foot health

**Healthy Calves**

- Improved colostrum quality
- Better vaccination response
- Lower incidence of scours

**Heavier calves**

- Increased milk production
- Tighter calving intervals
- Greater weaning weights



**AVAILA<sup>®</sup> 4**

**Bull Challenger benefits:**

- High fiber source for muscle expression
- Zinpro Availa 4 mineral package
- Proven formulation for genetic potential

[paybacknutrition.com](http://paybacknutrition.com)



To learn more about Payback feeds, contact

Kaitlyn Metzger  
Payback nutrition  
consultant  
701-340-6981

Brandon Weidert  
United Quality Co-op  
701-240-1230

*Thank you  
Sandhill Red  
Angus for all  
your support!*



38

SRJJ CUTTING EDGE 3162

DOB: 04-06-2023 TATTOO: SRJJ 3162 RAAA#: 4863972

RED JENSEN CACTUS 2Z
RED T-K CUTTING EDGE 127D
RED D-BAR SOXRO 61W
RED T-K UNTAPPED 21Z
SRJJ BRANDY B15
SRJJ GRAND BRANDY W2715

Table with columns: HB, GM, CED, BW, WW, YW, ADG, MILK, ME, HPG, CEM, STAY, MARB, YG, CW, REA, FAT. Row 1: 52, 10, 0, 56, 88, 0.2, 28, 3, 12, 6, 15. Row 2: 50%, 81%, 83%, 70%, 71%, 70%, 28%, 48%, 38%, 69%, 42%, %, %, %, %.



Maternal Brother to Lot 38



Maternal Brother Sold to Badger Creek Ranch in 2018

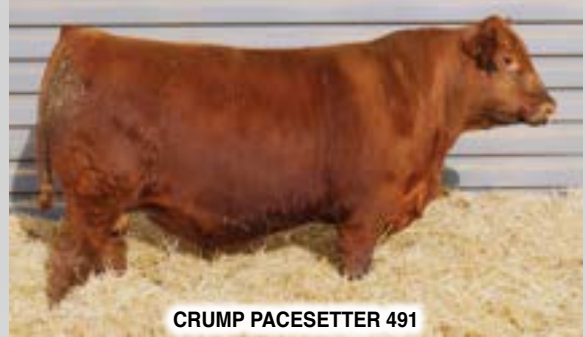
39

SRJJ CUTTING EDGE 3108

DOB: 03-22-2023 TATTOO: SRJJ 3108 RAAA#: 4863908

RED JENSEN CACTUS 2Z
RED T-K CUTTING EDGE 127D
RED D-BAR SOXRO 61W
CRUMP PACESETTER 491
SRJJ FIRELADY F334
SRJJ BRAND M-CANYON A134

Table with columns: HB, GM, CED, BW, WW, YW, ADG, MILK, ME, HPG, CEM, STAY, MARB, YG, CW, REA, FAT. Row 1: 48, 36, 12, -1.2, 55, 98, 0.27, 30, 5, 11, 7, 15, 0.29, 0.05, 21, 0.09, 0.01. Row 2: 57%, 56%, 62%, 64%, 72%, 51%, 24%, 15%, 59%, 59%, 58%, 42%, 81%, 40%, 60%, 62%, 32%.



CRUMP PACESETTER 491



LOT 39

RED ANGUS VALUE-ADDED PROGRAMS



- GENETICS | AGE | SOURCE: Feeder Call Certification Program
AGE | SOURCE: Allied Access
GENETICS: Premium Red Baldy
GENETICS: American Red

RE ANGUS RANCH TESTED. RANCHER TRUSTED. RedAngus.org | 940-477-4593

HOW TO ENROLL IN FCCP AND ALLIED ACCESS

- 1. Contact the Red Angus Association of America at 940-477-4593 and complete a short supplier enrollment questionnaire...
2. After all documentation is recorded, staff will ship the tags directly to the producer...
3. The producer will receive a customer enrollment agreement to fill out and return to RAAA...
4. Staff will issue the USDA-approved Certificate of Compliance upon receiving the customer enrollment agreement and calving record.

Dangle Tags - 99¢ each - EID Only - \$2 each
EID/Dangle Combo Sets - \$3 each
No Enrollment Fees

The Marketing Team offers assistance to Red Angus bull customers at no charge.

- Tyson's Choice+ Grid
Greater Omaha's G.O. Red Grid
Stockyard
Calendar of Events
Feedlot Partners
Red Angus FeederFest
Red Angus Show List



**40****SRJJ FORTUNATE SON 3145**

DOB: 03-30-2023 TATTOO: SRJJ 3145 RAAA#: 4863950

RED HOWE HESSTON 212C		PERF.	RATIO													
<b>RED U2 FORTUNATE SON 382F</b>																
RED U-2 ANEXA 271Y		BW	<b>80</b>													
CRUMP RUNAWAY 3178		205 WWT	<b>99</b>													
<b>SRJJ EQUAL C37</b>		365 YWT	<b>92</b>													
SRJJ JULIAN EQUAL W9037																
HB	GM	CED	BW	WW	YW	ADG	MILK	ME	HPG	CEM	STAY	MARB	YG	CW	REA	FAT
48	13	12	-0.5	60	92	0.2	30	1	9	6	16	0.25	-0.02	13	0.18	0.01
57%	92%	56%	76%	53%	63%	73%	13%	38%	91%	78%	35%	88%	13%	88%	41%	30%

**41****SRJJ FORTUNATE SON 3173**

DOB: 04-01-2023 TATTOO: SRJJ 3173 RAAA#: 4863988

RED HOWE HESSTON 212C		PERF.	RATIO													
<b>RED U2 FORTUNATE SON 382F</b>																
RED U-2 ANEXA 271Y		BW	<b>78</b>													
BAR M PALADIN 4001		205 WWT	<b>102</b>													
<b>SRJJ GUSTY E254</b>		365 YWT	<b>101</b>													
SRJJ GUSTY C54																
HB	GM	CED	BW	WW	YW	ADG	MILK	ME	HPG	CEM	STAY	MARB	YG	CW	REA	FAT
47		12	-0.7	65	101	0.22	29	0	10	6	14					
59%	%	63%	73%	35%	44%	56%	22%	35%	74%	70%	55%	%	%	%	%	%

**42****SRJJ FORTUNATE SON 3170**

DOB: 04-01-2023 TATTOO: SRJJ 3170 RAAA#: 4863982

RED HOWE HESSTON 212C		PERF.	RATIO													
<b>RED U2 FORTUNATE SON 382F</b>																
RED U-2 ANEXA 271Y		BW	<b>91</b>													
CRUMP PACESETTER 491		205 WWT	<b>106</b>													
<b>SRJJ BRANDY D415</b>		365 YWT	<b>103</b>													
SRJJ BRANDY B15																
HB	GM	CED	BW	WW	YW	ADG	MILK	ME	HPG	CEM	STAY	MARB	YG	CW	REA	FAT
33	33	8	2.8	73	116	0.27	24	6	9	4	14	0.29	0.09	32	0.23	0.03
83%	61%	96%	99%	12%	15%	21%	68%	67%	87%	93%	57%	81%	62%	19%	30%	64%

**43****SRJJ FORTUNATE SON 3096**

DOB: 03-22-2023 TATTOO: SRJJ 3096 RAAA#: 4863894

RED HOWE HESSTON 212C		PERF.	RATIO													
<b>RED U2 FORTUNATE SON 382F</b>																
RED U-2 ANEXA 271Y		BW	<b>94</b>													
SRJJ HARVESTOR 7093		205 WWT	<b>109</b>													
<b>SRJJ LARKABA G090</b>		365 YWT	<b>103</b>													
SRJJ LARKABA E90																
HB	GM	CED	BW	WW	YW	ADG	MILK	ME	HPG	CEM	STAY	MARB	YG	CW	REA	FAT
29		6	4.1	77	120	0.27	25	8	10	3	14					
88%	%	99%	99%	6%	10%	23%	60%	75%	76%	98%	57%	%	%	%	%	%

**LOT 41****LOT 42**

Locations in Ross, New Town &amp; Parshall, North Dakota

**Products Offered**

- Payback & Smartlic Feed
- ArrowQuip Chutes
- Hi-Qual/Sioux Gates and Panels
- Mack Steel Equipment
- Fencing Supplies
- Animal Health



Contact Gregg at 701-240-2719  
Or Brandon at 701-240-1230





DVO RIGHT OF FIRST REFUSAL

**44**

**SRJJ FIRST FUEL 3154**

DOB: 04-06-2023 TATTOO: SRJJ 3154 RAAA#: 4863960

RED BAR-E-L FIRST DOWN 161D  
**DVO RIGHT OF FIRST REFUSAL**  
 DVO PRINCENE

RED CROWFOOT 4ACES 2193Z  
 RED BAR-E-L GLORIA 87R

PERF. RATIO  
 BW **86 105**

XO CROWFOOT 0102X  
 CROWFOOT PRINCENE 6009S

205 WWT **705 102**

PIE CINCH 715

PIE CINCH 4126  
 PIE PLAYMATE 5253

365 YWT **932 96**

**SRJJ LARKABA 9235 H90**  
 SRJJ LARKABA D90

CRUMP PACESETTER 491  
 SRJJ LARKABA B90

HB	GM	CED	BW	WW	YW	ADG	MILK	ME	HPG	CEM	STAY	MARB	YG	CW	REA	FAT
47	27	9	1.3	67	108	0.26	25	0	12	4	15	0.29	0.1	19	0.07	0.03
58%	74%	93%	95%	26%	28%	31%	63%	33%	44%	94%	53%	81%	66%	71%	65%	73%



**LOT 44**





**45****SRJJ FIRST FUEL 3095**

DOB: 03-22-2023

TATTOO: SRJJ 3095

RAAA#: 4863892

RED BAR-E-L FIRST DOWN 161D

RED CROWFOOT 4ACES 2193Z

PERF. RATIO

DVO RIGHT OF FIRST REFUSAL

RED BAR-E-L GLORIA 87R

BW 87 107

DVO PRINCENE

XO CROWFOOT 0102X

205 WWT 661 96

SRJJ VISION 7023

CRUMP RUNAWAY 3178

365 YWT 961 99

SRJJ DAKOTA 8288 H58

SRJJ JULIAN EQUAL W9037

SRJJ DAKOTA E58

RED LWNBRG HARVESTOR 103C

HB	GM	CED	BW	WW	YW	ADG	MILK	ME	HPG	CEM	STAY	MARB	YG	CW	REA	FAT
55	20	11	0.4	66	106	0.25	22	0	11	5	16	0.26	0.09	16	-0.01	0.02
42%	84%	78%	88%	31%	33%	37%	85%	32%	61%	91%	30%	86%	64%	78%	81%	57%



Great Grand Dam of Lot 45 SRJJ JULIAN EQUAL W9037

**46****SRJJ FIRST FUEL 3110**

DOB: 03-22-2023

TATTOO: SRJJ 3110

RAAA#: 4863910

RED BAR-E-L FIRST DOWN 161D

RED CROWFOOT 4ACES 2193Z

PERF. RATIO

DVO RIGHT OF FIRST REFUSAL

RED BAR-E-L GLORIA 87R

BW 94 110

DVO PRINCENE

XO CROWFOOT 0102X

205 WWT 652 94

RED T-K UNTAPPED 21Z

RED BAR-E-L WARDEN 144W

365 YWT 802 83

SRJJ ROMEO E347

RED HAMCO LAURA 5S

RED ROMEO X47

LELAND RED DIRECTION 8348U

HB	GM	CED	BW	WW	YW	ADG	MILK	ME	HPG	CEM	STAY	MARB	YG	CW	REA	FAT
62	12	8	1.8	67	108	0.25	19	1	13	5	16	0.15	0.04	14	0.15	0.03
30%	93%	95%	97%	27%	29%	34%	96%	37%	27%	88%	29%	97%	34%	85%	47%	66%



LOT 46

**47****SRJJ FIRST FUEL 3160**

DOB: 04-04-2023

TATTOO: SRJJ 3160

RAAA#: 4863970

RED BAR-E-L FIRST DOWN 161D

RED CROWFOOT 4ACES 2193Z

PERF. RATIO

DVO RIGHT OF FIRST REFUSAL

RED BAR-E-L GLORIA 87R

BW 85 103

DVO PRINCENE

XO CROWFOOT 0102X

205 WWT 717 104

RED BAR-E-L FIRST DOWN 161D

RED CROWFOOT 4ACES 2193Z

365 YWT 1187 122

SRJJ ECHO 8241 HY226

RED BAR-E-L GLORIA 87R

936 ECHO 2526

LARSON THUNDERBIRD 936

HB	GM	CED	BW	WW	YW	ADG	MILK	ME	HPG	CEM	STAY	MARB	YG	CW	REA	FAT
63	14	10	0.1	68	108	0.25	22	-2	13	4	16	0.14	0.04	16	0.15	0.02
28%	91%	82%	84%	25%	28%	34%	83%	23%	24%	95%	27%	98%	34%	80%	47%	57%



Grand Sire to Lot 47 RED BAR-E-L FIRST DOWN 161D

**48****SRJJ FIRST FUEL 3233**

DOB: 04-25-2023

TATTOO: SRJJ 3233

RAAA#: 4864056

RED BAR-E-L FIRST DOWN 161D

RED CROWFOOT 4ACES 2193Z

PERF. RATIO

DVO RIGHT OF FIRST REFUSAL

RED BAR-E-L GLORIA 87R

BW 86 104

DVO PRINCENE

XO CROWFOOT 0102X

205 WWT 664 96

RED U2 BLUE COLLAR 295E

RED U-2 RECKONING 149A

365 YWT 874 90

SRJJ ECHO 8256 HX426

RED U-2 ANEXA 438A

936 ECHO 2526

LARSON THUNDERBIRD 936

HB	GM	CED	BW	WW	YW	ADG	MILK	ME	HPG	CEM	STAY	MARB	YG	CW	REA	FAT
51	17	10	0.5	65	104	0.25	23	-1	11	5	15	0.2	0.06	17	0.14	0.03
50%	89%	86%	89%	35%	36%	39%	76%	28%	56%	91%	44%	94%	45%	78%	49%	68%



936 ECHO 2526 Y26



LOT 48

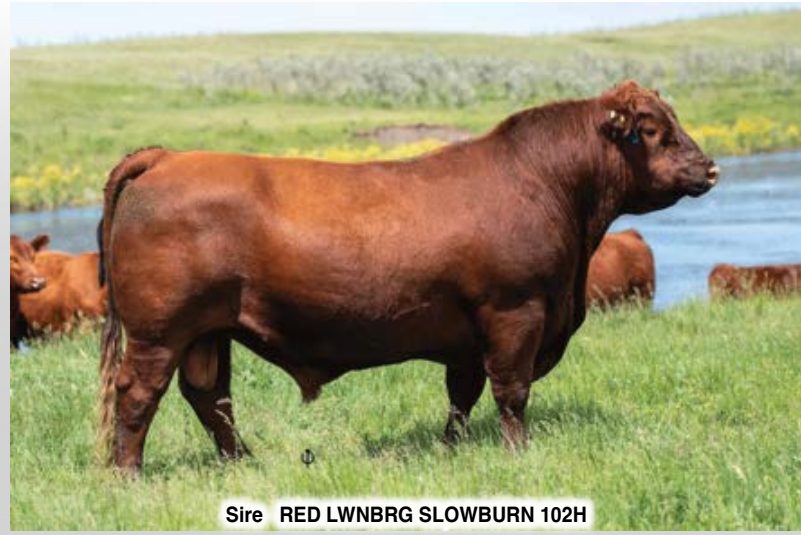


**49****SRJJ SLOWBURN 3014**

DOB: 02-26-2023 TATTOO: SRJJ 3014 RAAA#: 4863806

RED U2 DOMINION	RED HOWE HESSTON 212C RED U2 HIDEE HO 459D	PERF.	RATIO
RED LWNBRG SLOWBURN 102H		BW	<b>76</b> <b>104</b>
RED U2 FAVORITE 275F	RED U-2 RENOWN 193C RED KBJ FAVORITE 931B	205 WWT	<b>696</b> <b>101</b>
SRJJ MAVERICK 9046	RED LWNBRG HARVESTOR 103C SRJJ BRAND A151	365 YWT	<b>971</b> <b>95</b>
SRJJ BLOCKANA J63	CRUMP PACESETTER 491 SRJJ BLOCKANA C63		
SRJJ BLOCKANA F163			

HB	GM	CED	BW	WW	YW	ADG	MILK	ME	HPG	CEM	STAY	MARB	YG	CW	REA	FAT
21	20	10	1.2	73	113	0.25	22	3	8	4	12	0.25	0.08	28	0.14	0.02
94%	86%	88%	94%	12%	19%	33%	80%	50%	95%	93%	80%	88%	57%	33%	49%	45%

**Sire RED LWNBRG SLOWBURN 102H****50****SRJJ SLOWBURN 3001**

DOB: 02-18-2023 TATTOO: SRJJ 3001 RAAA#: 4863788

RED U2 DOMINION	RED HOWE HESSTON 212C RED U2 HIDEE HO 459D	PERF.	RATIO
RED LWNBRG SLOWBURN 102H		BW	<b>78</b> <b>106</b>
RED U2 FAVORITE 275F	RED U-2 RENOWN 193C RED KBJ FAVORITE 931B	205 WWT	<b>650</b> <b>95</b>
RED T-K TEN SPEED 52F	RED GLESBAR CAPONE 23B RED ANCHOR 1 MISS RIB 6Y	365 YWT	<b>990</b> <b>97</b>
SRJJ DIANA J87	RED LWNBRG HARVESTOR 103C SRJJ DYNA C87		
SRJJ DYNA F87			

HB	GM	CED	BW	WW	YW	ADG	MILK	ME	HPG	CEM	STAY	MARB	YG	CW	REA	FAT
30	13	9	1.5	71	113	0.26	21	3	8	4	14	0.17	-0.01	23	0.24	0
87%	92%	90%	96%	16%	19%	27%	90%	51%	94%	94%	62%	96%	15%	54%	29%	21%

**LOT 52****51****SRJJ SLOWBURN 3065**

DOB: 03-04-2023 TATTOO: SRJJ 3065 RAAA#: 4863856

RED U2 DOMINION	RED HOWE HESSTON 212C RED U2 HIDEE HO 459D	PERF.	RATIO
RED LWNBRG SLOWBURN 102H		BW	<b>87</b> <b>117</b>
RED U2 FAVORITE 275F	RED U-2 RENOWN 193C RED KBJ FAVORITE 931B	205 WWT	<b>761</b> <b>111</b>
SRJJ GUNNER 9130	RED LWNBRG HARVESTOR 103C SRJJ PRINCESS B16	365 YWT	<b>1035</b> <b>101</b>
SRJJ REBELLA J41	CRUMP RUNAWAY 3178 SRJJ RIDIN RED Z41		
SRJJ REBELLA E241			

HB	GM	CED	BW	WW	YW	ADG	MILK	ME	HPG	CEM	STAY	MARB	YG	CW	REA	FAT
36	28	9	3.7	84	135	0.32	25	11	9	4	15	0.27	0.02	33	0.29	0.01
80%	71%	93%	99%	1%	2%	5%	58%	88%	92%	93%	46%	85%	26%	18%	20%	28%

**52****SRJJ SLOWBURN 3027**

DOB: 03-11-2023 TATTOO: SRJJ 3027 RAAA#: 4863818

RED U2 DOMINION	RED HOWE HESSTON 212C RED U2 HIDEE HO 459D	PERF.	RATIO
RED LWNBRG SLOWBURN 102H		BW	<b>78</b> <b>105</b>
RED U2 FAVORITE 275F	RED U-2 RENOWN 193C RED KBJ FAVORITE 931B	205 WWT	<b>827</b> <b>121</b>
RED T-K CUTTING EDGE 127D	RED JENSEN CACTUS 22 RED D-BARR 30XRO B1W	365 YWT	<b>1206</b> <b>118</b>
SRJJ BUSTY J36	RED SVP GANGSTER 14S MSJ CHEROKEE 4228-2150-6233		
SRJJ GANGSTER CHEROKEE Z36			

HB	GM	CED	BW	WW	YW	ADG	MILK	ME	HPG	CEM	STAY	MARB	YG	CW	REA	FAT
35	21	10	1.5	80	128	0.3	29	5	9	4	14	0.14	-0.02	30	0.36	0
81%	83%	87%	96%	3%	4%	9%	25%	62%	91%	92%	60%	98%	12%	24%	12%	16%

**LOT 53****53****SRJJ SLOWBURN 3028**

DOB: 03-10-2023 TATTOO: SRJJ 3028 RAAA#: 4863820

RED U2 DOMINION	RED HOWE HESSTON 212C RED U2 HIDEE HO 459D	PERF.	RATIO
RED LWNBRG SLOWBURN 102H		BW	<b>83</b> <b>102</b>
RED U2 FAVORITE 275F	RED U-2 RENOWN 193C RED KBJ FAVORITE 931B	205 WWT	<b>640</b> <b>93</b>
WFL MERLIN 018A	LJC MERLIN T179 WFL COMMITMENT 042Y	365 YWT	<b>931</b> <b>96</b>
SRJJ ECHO H26	LARSON THUNDEBIRD 936 ECHO 001 2523		
936 ECHO 2526			

HB	GM	CED	BW	WW	YW	ADG	MILK	ME	HPG	CEM	STAY	MARB	YG	CW	REA	FAT
13	16	11	-0.3	73	114	0.25	26	6	9	3	12	0.24	-0.06	21	0.32	0
98%	89%	77%	79%	11%	18%	34%	53%	68%	88%	97%	83%	90%	6%	61%	16%	11%



**54****SRJJ LEADING EDGE 3011**

DOB: 02-22-2023 TATTOO: SRJJ 3011 RAAA#: 4863800

5L LEADING EDGE 1221-79A

BUF CRK THE RIGHT KIND U199

PERF. RATIO

5L LEADING EDGE 15383-117C

5L BLACKBIRD 5519-1221

BW 61 85

5L RED BIRD 411-15383

5L PURSUIT 3244-127X

5L RED BIRD 1312-411

205 WWT 648 94

SRJJ MAVERICK 9046

RED LWNBRG HARVESTOR 103C

SRJJ BRAND A151

365 YWT 1014 99

SRJJ DOROTHY J08

SRJJ DOROTHY C8

RED BRAND X05

SR DOROTHY 028-8016

HB	GM	CED	BW	WW	YW	ADG	MILK	ME	HPG	CEM	STAY	MARB	YG	CW	REA	FAT
59	28	13	-3.3	62	93	0.19	25	-1	13	8	14	0.44	0.14	27	0.01	0.03
35%	71%	44%	24%	48%	62%	75%	58%	29%	23%	36%	59%	45%	86%	38%	77%	71%

HEIFER BULL

**LOT 54****55****SRJJ LEADING EDGE 3063**

DOB: 03-03-2023 TATTOO: SRJJ 3063 RAAA#: 4863852

5L LEADING EDGE 1221-79A

BUF CRK THE RIGHT KIND U199

PERF. RATIO

5L LEADING EDGE 15383-117C

5L BLACKBIRD 5519-1221

BW 83 112

5L RED BIRD 411-15383

5L PURSUIT 3244-127X

5L RED BIRD 1312-411

205 WWT 670 98

PIE CINCH 715

PIE CINCH 4126

PIE PLAYMATE 5253

365 YWT 1036 102

SRJJ TASSEL J66

SRJJ TASSEL E166

RED T-K UNTAPPED 21Z

LELAND RED DIRECTION 8403U

HB	GM	CED	BW	WW	YW	ADG	MILK	ME	HPG	CEM	STAY	MARB	YG	CW	REA	FAT
65	25	11	0.1	64	96	0.2	26	0	13	6	16	0.4	0.07	20	0.11	0.02
24%	77%	79%	84%	37%	54%	72%	46%	31%	23%	64%	38%	54%	50%	66%	56%	57%

HEIFER BULL



Maternal Grand Sire RED T-K UNTAPPED 21Z

**56****SRJJ LEADING EDGE 3007**

DOB: 02-21-2023 TATTOO: SRJJ 3007 RAAA#: 4863794

5L LEADING EDGE 1221-79A

BUF CRK THE RIGHT KIND U199

PERF. RATIO

5L LEADING EDGE 15383-117C

5L BLACKBIRD 5519-1221

BW 66 91

5L RED BIRD 411-15383

5L PURSUIT 3244-127X

5L RED BIRD 1312-411

205 WWT 628 92

RED T-K CUTTING EDGE 127D

RED JENSEN CACTUS 2Z

RED D-BAR SOXRO 61W

365 YWT 877 86

SRJJ BRANDY J115

SRJJ BRANDY B15

RED T-K UNTAPPED 21Z

SRJJ GRAND BRANDY W2715

HB	GM	CED	BW	WW	YW	ADG	MILK	ME	HPG	CEM	STAY	MARB	YG	CW	REA	FAT
62	25	13	-2.5	57	90	0.21	28	1	13	8	15	0.34	0.04	20	0.13	0.01
28%	77%	44%	38%	64%	67%	68%	34%	39%	23%	38%	41%	69%	34%	66%	51%	37%

HEIFER BULL

**LOT 57****57****SRJJ LEADING EDGE 3029**

DOB: 03-13-2023 TATTOO: SRJJ 3029 RAAA#: 4863822

5L LEADING EDGE 1221-79A

BUF CRK THE RIGHT KIND U199

PERF. RATIO

5L LEADING EDGE 15383-117C

5L BLACKBIRD 5519-1221

BW 68 92

5L RED BIRD 411-15383

5L PURSUIT 3244-127X

5L RED BIRD 1312-411

205 WWT 641 93

SRJJ GUNNER 9130

RED LWNBRG HARVESTOR 103C

SRJJ PRINCESS 516

365 YWT 1014 99

SRJJ WETONKA J198

SRJJ WETONKA D98

CRUMP FACESETTER 491

SRJJ WETONKA 698

HB	GM	CED	BW	WW	YW	ADG	MILK	ME	HPG	CEM	STAY	MARB	YG	CW	REA	FAT
56	44	13	-2.2	66	108	0.27	25	6	12	8	15	0.52	0.13	29	0.04	0.03
39%	38%	42%	44%	32%	28%	25%	60%	68%	43%	28%	44%	29%	83%	30%	71%	64%

HEIFER BULL

**LOT 58****58****SRJJ 3013**

DOB: 02-27-2023 TATTOO: SRJJ 3013 RAAA#: 4863804

Waiting on Sire Verification

PERF. RATIO  
BW 87

LSF KCC PREMIER 5608C

BROWN PREMIER X7876

KCC NANCY A3

205 WWT 689

SUNR 984G

SUNR NIRVANA A300

RED SSS OLY 585X

SUNR NIRVANA 101

365 YWT 946

HB	GM	CED	BW	WW	YW	ADG	MILK	ME	HPG	CEM	STAY	MARB	YG	CW	REA	FAT
32		10	-0.1	66	101	0.21	23			5	10					
84%	%	88%	82%	30%	44%	62%	75%	%	%	88%	92%	%	%	%	%	%

Potential Sires - RAAA# 4121770 RAAA# 4473037 RAAA# 3966437



**59****SRJJ BLUE COLLAR 3195**DOB: **04-09-2023** TATTOO: **SRJJ 3195** RAAA#: **4864020**

RED U-2 RECKONING 149A	RED U-2 RECON 192Y RED U-2 ANEXA 271Y	PERF.	RATIO
<b>RED U2 BLUE COLLAR 295E</b>		BW	<b>77</b> <b>92</b>
RED U-2 ANEXA 439A	RED MINBURN COPENHAGEN 3Y RED U-2 ANEXA 443Y	205 WWT	<b>672</b> <b>97</b>
SRJJ UNTAPPED 4204	RED T-K UNTAPPED 21Z SRJJ ROMEO W147	365 YWT	<b>983</b> <b>101</b>
<b>SRJJ FIRELADY G034</b>	CRUMP RUNAWAY 3178 MR GRAND Y24		
SRJJ FIRELADY D134			

HB	GM	CED	BW	WW	YW	ADG	MILK	ME	HPG	CEM	STAY	MARB	YG	CW	REA	FAT
61	25	12	-1.3	64	101	0.24	26	-3	8	8	16	0.39	0.06	15	0.02	0.02
31%	77%	57%	61%	40%	43%	46%	54%	23%	97%	38%	29%	57%	47%	82%	75%	45%

**Sire RED U2 BLUE COLLAR 295E****60****SRJJ BLUE COLLAR 3238**DOB: **04-27-2023** TATTOO: **SRJJ 3238** RAAA#: **4864062**

RED U-2 RECKONING 149A	RED U-2 RECON 192Y RED U-2 ANEXA 271Y	PERF.	RATIO
<b>RED U2 BLUE COLLAR 295E</b>		BW	<b>93</b> <b>109</b>
RED U-2 ANEXA 439A	RED MINBURN COPENHAGEN 3Y RED U-2 ANEXA 443Y	205 WWT	<b>778</b> <b>112</b>
9 MILE FRANCHISE 6305	SPUR FRANCHISE OF GARTON C-BAR ABIGRAICE Y11	365 YWT	<b>1143</b> <b>118</b>
<b>SRJJ WENDY F95</b>	CRUMP RUNAWAY 3178 SRJJ BRAND WENDY A95		
SRJJ WENDY C95			

HB	GM	CED	BW	WW	YW	ADG	MILK	ME	HPG	CEM	STAY	MARB	YG	CW	REA	FAT
53	46	10	1.4	74	122	0.3	29	-3	7	7	15	0.45	0.06	31	0.33	0.03
47%	34%	88%	95%	10%	8%	9%	22%	22%	98%	47%	51%	42%	45%	23%	15%	69%

**LOT 59****61****SRJJ BLUE COLLAR 3158**DOB: **04-03-2023** TATTOO: **SRJJ 3158** RAAA#: **4863966**

RED U-2 RECKONING 149A	RED U-2 RECON 192Y RED U-2 ANEXA 271Y	PERF.	RATIO
<b>RED U2 BLUE COLLAR 295E</b>		BW	<b>81</b> <b>97</b>
RED U-2 ANEXA 439A	RED MINBURN COPENHAGEN 3Y RED U-2 ANEXA 443Y	205 WWT	<b>719</b> <b>104</b>
RED LWNBRG HARVESTOR 103C	TED HARVESTOR 194A RED TED MAGNUM 141Y	365 YWT	<b>1000</b> <b>103</b>
<b>SRJJ SKYLER G93</b>	FEDDES BIG SKY R9 MRM 916 H155 M103		
LGS SKYLER 731T			

HB	GM	CED	BW	WW	YW	ADG	MILK	ME	HPG	CEM	STAY	MARB	YG	CW	REA	FAT
45	27	10	0.7	73	112	0.24	21	-1	7	6	14	0.36	0.11	28	0.09	0.02
63%	73%	87%	91%	12%	22%	41%	89%	26%	98%	69%	55%	65%	72%	32%	62%	55%

**LOT 60****62****SRJJ BLUE COLLAR 3097**DOB: **03-21-2023** TATTOO: **SRJJ 3097** RAAA#: **4863896**

RED U-2 RECKONING 149A	RED U-2 RECON 192Y RED U-2 ANEXA 271Y	PERF.	RATIO
<b>RED U2 BLUE COLLAR 295E</b>		BW	<b>91</b> <b>107</b>
RED U-2 ANEXA 439A	RED MINBURN COPENHAGEN 3Y RED U-2 ANEXA 443Y	205 WWT	<b>631</b> <b>91</b>
RED T-K UNTAPPED 21Z	RED BAR-E-L WARDEN 144W RED HAMCO LAURA 55	365 YWT	<b>894</b> <b>92</b>
<b>SRJJ PLAY E146</b>	RED NORTHLINE TRUEBLOOD 341T HLG MISS PLAY 386		
SRJJ TRUE PLAY Z46			

HB	GM	CED	BW	WW	YW	ADG	MILK	ME	HPG	CEM	STAY	MARB	YG	CW	REA	FAT
49	15	7	2.4	65	102	0.23	22	-3	9	6	15	0.23	0.02	16	0.18	0.02
56%	91%	97%	98%	35%	42%	51%	84%	23%	92%	81%	48%	91%	27%	80%	41%	53%

**LOT 63****63****SRJJ BLUE COLLAR 3100**DOB: **03-22-2023** TATTOO: **SRJJ 3100** RAAA#: **4863898**

RED U-2 RECKONING 149A	RED U-2 RECON 192Y RED U-2 ANEXA 271Y	PERF.	RATIO
<b>RED U2 BLUE COLLAR 295E</b>		BW	<b>98</b> <b>115</b>
RED U-2 ANEXA 439A	RED MINBURN COPENHAGEN 3Y RED U-2 ANEXA 443Y	205 WWT	<b>727</b> <b>105</b>
CRUMP RUNAWAY 3178	CRUMP 300 ULTRA MAGNUM Y106 BLUF CRK PRIMROSE U021	365 YWT	<b>1072</b> <b>110</b>
<b>SRJJ LANCER C62</b>	HAMMEL BIG SKY 208T-ET MS HAMMEL LANCER S169		
SRJJ SKY LANCER W269			

HB	GM	CED	BW	WW	YW	ADG	MILK	ME	HPG	CEM	STAY	MARB	YG	CW	REA	FAT
60	30	9	2.4	74	117	0.26	28	1	8	6	17	0.4	0.03	20	0.14	0.01
32%	67%	91%	98%	9%	14%	27%	28%	35%	97%	76%	20%	54%	27%	67%	49%	32%



**64****SRJJ BLUE COLLAR 3093**

DOB: 03-22-2023 TATTOO: SRJJ 3093 RAAA#: 4863890

RED U-2 RECKONING 149A	RED U-2 RECON 192Y RED U-2 ANEXA 271Y	PERF.	RATIO
<b>RED U2 BLUE COLLAR 295E</b>		BW	<b>82</b> <b>97</b>
RED U-2 ANEXA 439A	RED MINBURN COPENHAGEN 3Y RED U-2 ANEXA 443Y	205 WWT	<b>688</b> <b>99</b>
LELAND RED DIRECTION 8348U	SL RED DIRECTION 891-6046 LELAND GRAND CANYON 1024	365 YWT	<b>951</b> <b>98</b>
<b>SRJJ RED IDAHO Z12</b>	LCC IDAHO A888M DUNN 3409		

HB	GM	CED	BW	WW	YW	ADG	MILK	ME	HPG	CEM	STAY	MARB	YG	CW	REA	FAT
51	31	9	1.3	72	115	0.27	24	2	7	6	16	0.34	0.08	29	0.21	0.03
52%	66%	92%	95%	15%	17%	23%	68%	44%	97%	66%	34%	69%	57%	29%	34%	64%

**Dam of Lot 64 SRJJ RED IDAHO Z12****65****SRJJ BLUE COLLAR 3229**

DOB: 04-21-2023 TATTOO: SRJJ 3229 RAAA#: 4864054

RED U-2 RECKONING 149A	RED U-2 RECON 192Y RED U-2 ANEXA 271Y	PERF.	RATIO
<b>RED U2 BLUE COLLAR 295E</b>		BW	<b>87</b> <b>102</b>
RED U-2 ANEXA 439A	RED MINBURN COPENHAGEN 3Y RED U-2 ANEXA 443Y	205 WWT	<b>712</b> <b>103</b>
CRUMP RUNAWAY 3178	CRUMP 300 ULTRA MAGNUM Y106 BUF CRK PRIMROSE U021	365 YWT	<b>1050</b> <b>108</b>
<b>SRJJ PANDORA D135</b>	BAR M MR MISSION 9024 MESSMER PANDORA W035		
SRJJ MISS PANDORA Y35			

HB	GM	CED	BW	WW	YW	ADG	MILK	ME	HPG	CEM	STAY	MARB	YG	CW	REA	FAT
42	28	11	0.5	71	110	0.25	29	1	8	6	14	0.43	0.02	19	0.19	0.01
69%	72%	75%	89%	17%	24%	38%	23%	37%	96%	64%	60%	47%	25%	70%	38%	42%

**LOT 65****66****SRJJ BLUE COLLAR 3211**

DOB: 04-12-2023 TATTOO: SRJJ 3211 RAAA#: 4864038

RED U-2 RECKONING 149A	RED U-2 RECON 192Y RED U-2 ANEXA 271Y	PERF.	RATIO
<b>RED U2 BLUE COLLAR 295E</b>		BW	<b>86</b> <b>101</b>
RED U-2 ANEXA 439A	RED MINBURN COPENHAGEN 3Y RED U-2 ANEXA 443Y	205 WWT	<b>664</b> <b>96</b>
CRUMP PACESETTER 491	SL MTN SIGN 435-10Z MDM VERNICE 1020	365 YWT	<b>873</b> <b>90</b>
<b>SRJJ REBELLA F41</b>	RED BRAND X05 SRJJ RIDIN RED Z41		
SRJJ ROBINHOOD C41			

HB	GM	CED	BW	WW	YW	ADG	MILK	ME	HPG	CEM	STAY	MARB	YG	CW	REA	FAT
45	42	11	-0.7	60	101	0.26	25	-3	8	8	14	0.45	0.13	23	0.06	0.04
63%	41%	70%	73%	55%	44%	31%	55%	21%	96%	36%	66%	42%	82%	54%	67%	84%

**LOT 66****67****SRJJ BLUE COLLAR 3165**

DOB: 04-02-2023 TATTOO: SRJJ 3165 RAAA#: 4863976

RED U-2 RECKONING 149A	RED U-2 RECON 192Y RED U-2 ANEXA 271Y	PERF.	RATIO
<b>RED U2 BLUE COLLAR 295E</b>		BW	<b>85</b> <b>102</b>
RED U-2 ANEXA 439A	RED MINBURN COPENHAGEN 3Y RED U-2 ANEXA 443Y	205 WWT	<b>676</b> <b>98</b>
SRJJ VISION 7023	CRUMP RUNAWAY 3178 SRJJ JUAN EQUAL W9037	365 YWT	<b>957</b> <b>99</b>
<b>SRJJ PRECIOUS G97</b>	LELAND COOL Y109 SRJJ HEADLINER Z57		
SRJJ PRICE B297			

HB	GM	CED	BW	WW	YW	ADG	MILK	ME	HPG	CEM	STAY	MARB	YG	CW	REA	FAT
57	18	10	1.1	68	103	0.22	26	-1	7	6	16	0.37	0.04	15	0.14	0.02
39%	88%	83%	93%	23%	39%	60%	48%	29%	97%	64%	27%	63%	33%	81%	49%	55%

**2023 Sale son of Blue Collar that sold to Caleb Unick, Nebraska****SRJJ TEN SPEED 2162 2023 Sale Highlight sold to Kirk Cornwell, Maternal Brother to lot 67**





**LOT 71**



**LOT 72**

**68 SRJJ FORTUNATE SON 3180**  
 DOB: 04-06-2023 TATTOO: SRJJ 3180 RAAA#: 4864000  
 RED HOWE HESSTON 212C  
 RED U2 FORTUNATE SON 382F  
 RED U-2 ANEXA 271Y

PERF.	RATIO	
BW	85	101
205 WWT	727	105
365 YWT	885	91

HB	GM	CED	BW	WW	YW	ADG	MILK	ME	HPG	CEM	STAY	MARB	YG	CW	REA	FAT
46	8	8	2.1	67	100	0.2	27	8	11	5	16	0.19	0.01	20	0.24	0.02
61%	96%	96%	98%	28%	47%	69%	38%	75%	51%	90%	35%	95%	21%	67%	29%	44%

**71 SRJJ TEN SPEED 3157**  
 DOB: 04-07-2023 TATTOO: SRJJ 3157 RAAA#: 4863964  
 RED GLESBAR CAPONE 23B  
 RED T-K TEN SPEED 52F  
 RED ANCHOR 1 MISS RIB 6Y

PERF.	RATIO	
BW	75	92
205 WWT	733	106
365 YWT	1002	103

HB	GM	CED	BW	WW	YW	ADG	MILK	ME	HPG	CEM	STAY	MARB	YG	CW	REA	FAT
72		10	0.7	70	114	0.28	24	2	10	7	18					
14%	%	81%	91%	19%	18%	20%	66%	43%	74%	57%	11%	%	%	%	%	%

**69 SRJJ FORTUNATE SON 3171**  
 DOB: 03-31-2023 TATTOO: SRJJ 3171 RAAA#: 4863984  
 RED HOWE HESSTON 212C  
 RED U2 FORTUNATE SON 382F  
 RED U-2 ANEXA 271Y

PERF.	RATIO	
BW	93	110
205 WWT	651	94
365 YWT	892	92

HB	GM	CED	BW	WW	YW	ADG	MILK	ME	HPG	CEM	STAY	MARB	YG	CW	REA	FAT
46	6	6	3.1	64	99	0.22	21	0	11	3	16	0.12	0.02	16	0.17	0.01
60%	97%	99%	99%	40%	49%	59%	87%	34%	48%	99%	31%	98%	24%	80%	43%	42%

**72 SRJJ TEN SPEED 3083**  
 DOB: 03-17-2023 TATTOO: SRJJ 3083 RAAA#: 4863872  
 RED GLESBAR CAPONE 23B  
 RED T-K TEN SPEED 52F  
 RED ANCHOR 1 MISS RIB 6Y

PERF.	RATIO	
BW	98	119
205 WWT	746	108
365 YWT	1033	106

HB	GM	CED	BW	WW	YW	ADG	MILK	ME	HPG	CEM	STAY	MARB	YG	CW	REA	FAT
46		5	4.5	79	127	0.29	22	2	11	3	16					
61%	%	99%	99%	4%	5%	11%	85%	44%	64%	99%	34%	%	%	%	%	%

**70 SRJJ 3114**  
 DOB: 03-23-2023 TATTOO: SRJJ 3114 RAAA#: 4863916  
 Waiting on Sire Verification

PERF.	RATIO	
BW	62	
205 WWT	685	
365 YWT	973	

HB	GM	CED	BW	WW	YW	ADG	MILK	ME	HPG	CEM	STAY	MARB	YG	CW	REA	FAT
24		14	-3.8	57	86	0.18	23			8	8					
93%	%	32%	17%	64%	74%	82%	73%	%	%	35%	98%	%	%	%	%	%

**73 SRJJ TEN SPEED 3042**  
 DOB: 03-16-2023 TATTOO: SRJJ 3042 RAAA#: 4863834  
 RED GLESBAR CAPONE 23B  
 RED T-K TEN SPEED 52F  
 RED ANCHOR 1 MISS RIB 6Y

PERF.	RATIO	
BW	98	119
205 WWT	667	96
365 YWT	949	98

HB	GM	CED	BW	WW	YW	ADG	MILK	ME	HPG	CEM	STAY	MARB	YG	CW	REA	FAT
45		5	4.4	74	119	0.28	23	6	10	2	17					
63%	%	99%	99%	11%	12%	16%	74%	64%	72%	99%	21%	%	%	%	%	%

**HEIFER BULL**  
 Potential Sires - SRJJ HOLDEM 0022 OR SRJJ JUDICIOUS 1012



Reference Sire RED U2 FORTUNATE SON 382F



Reference Sire RED T-K TEN SPEED 52F



**74****SRJJ ESCALADE 3130**

DOB: 03-27-2023 TATTOO: SRJJ 3130 RAAA#: 4863936

RED JRA ESCALADE 76A	RED TR ESCALADE 318T RED SHODEREE DUCHESS 88R	PERF.	RATIO
RED GLYING K ESCALADE 203F		BW	73 90
RED FLYING K CHARITY 73C	TONGUE RIVER JESSE AT385 RED FLYING K LINETT 201A		
		205	611 88
SRJJ UNTAPPED 5047	RED T-K UNTAPPED 21Z 936 ECHO 2526		
SRJJ MAJESTIC H132		365	838 86
SRJJ MAJESTIC F32	JACOBSON WEIGHT OUT 6171 36RR MS MAJESTIC 1231		

HB	GM	CED	BW	WW	YW	ADG	MILK	ME	HPG	CEM	STAY	MARB	YG	CW	REA	FAT
54	15	12	-1	58	87	0.18	21	1	11	4	18	0.4	-0.02	6	0.14	0.01
44%	91%	68%	67%	61%	73%	82%	87%	39%	59%	95%	16%	54%	13%	96%	49%	42%

**HEIFER BULL****75****SRJJ ESCALADE 3102**

DOB: 03-22-2023 TATTOO: SRJJ 3102 RAAA#: 4863902

RED JRA ESCALADE 76A	RED TR ESCALADE 318T RED SHODEREE DUCHESS 88R	PERF.	RATIO
RED GLYING K ESCALADE 203F		BW	77 95
RED FLYING K CHARITY 73C	TONGUE RIVER JESSE AT385 RED FLYING K LINETT 201A		
		205	650 94
5L BLOCKADE 2218-30B	5L DEFENDER 560-30Z 5L PRETTY PWR 1302-737		
SRJJ BRANDY H515		365	925 95
SRJJ BRANDY F15	JACOBSON WEIGHT OUT 6171 SRJJ BRANDY 2715		

HB	GM	CED	BW	WW	YW	ADG	MILK	ME	HPG	CEM	STAY	MARB	YG	CW	REA	FAT
40	31	11	-0.3	59	91	0.2	21	-2	10	3	16	0.48	-0.05	12	0.24	0.01
73%	65%	77%	79%	57%	65%	72%	89%	25%	80%	98%	37%	36%	8%	89%	29%	23%

**HEIFER BULL****76****SRJJ ESCALADE 3141**

DOB: 03-30-2023 TATTOO: SRJJ 3141 RAAA#: 4863946

RED JRA ESCALADE 76A	RED TR ESCALADE 318T RED SHODEREE DUCHESS 88R	PERF.	RATIO
RED GLYING K ESCALADE 203F		BW	79 96
RED FLYING K CHARITY 73C	TONGUE RIVER JESSE AT385 RED FLYING K LINETT 201A		
		205	719 104
9 MILE FRANCHISE 6305	SPUR FRANCHISE OF GARTON C-BAR ABIGRAE Y11		
SRJJ ECHO 8233 HT326		365	903 93
936 ECHO 2526	LARSON THUNDERBIRD 936 ECHO 091 2526		

HB	GM	CED	BW	WW	YW	ADG	MILK	ME	HPG	CEM	STAY	MARB	YG	CW	REA	FAT
64	32	12	-1.9	63	97	0.21	28	-1	11	4	18	0.46	-0.03	16	0.32	0.02
26%	63%	63%	50%	43%	52%	63%	34%	29%	62%	93%	11%	40%	11%	80%	16%	51%

**HEIFER BULL****77****SRJJ ESCALADE 3190**

DOB: 04-07-2023 TATTOO: SRJJ 3190 RAAA#: 4864012

RED JRA ESCALADE 76A	RED TR ESCALADE 318T RED SHODEREE DUCHESS 88R	PERF.	RATIO
RED GLYING K ESCALADE 203F		BW	62 76
RED FLYING K CHARITY 73C	TONGUE RIVER JESSE AT385 RED FLYING K LINETT 201A		
		205	615 89
RED TER-RON PARKER 34A	TER-RON PARK PLACE 18Y RED TER-RON DIAMOND MIST 164		
SRJJ ECHO 8209 HP26		365	870 90
936 ECHO 2526	LARSON THUNDERBIRD 936 ECHO 091 2526		

HB	GM	CED	BW	WW	YW	ADG	MILK	ME	HPG	CEM	STAY	MARB	YG	CW	REA	FAT
46	9	13	-2.9	56	84	0.18	21	-1	12	3	16	0.29	-0.07	7	0.24	0.01
61%	96%	48%	31%	68%	77%	83%	89%	27%	44%	97%	30%	81%	5%	95%	29%	25%

**HEIFER BULL****78****SRJJ ESCALADE 3135**

DOB: 03-22-2023 TATTOO: SRJJ 3135 RAAA#: 4863940

RED JRA ESCALADE 76A	RED TR ESCALADE 318T RED SHODEREE DUCHESS 88R	PERF.	RATIO
RED GLYING K ESCALADE 203F		BW	61
RED FLYING K CHARITY 73C	TONGUE RIVER JESSE AT385 RED FLYING K LINETT 201A		
		205	589
PIE CINCH 715	PIE CINCH 4126 PIE PLAYMATE 5253		
SRJJ DUCHESS 8298 H077		365	791
SRJJ LOGAN D77	BAR M PALADIN 4001 SRJJ LOGAN B77		

HB	GM	CED	BW	WW	YW	ADG	MILK	ME	HPG	CEM	STAY	MARB	YG	CW	REA	FAT
61	16	11	-0.8	57	80	0.14	28	-4	11	4	18	0.45	0.01	4	0.03	0.01
31%	90%	80%	71%	66%	83%	92%	30%	20%	52%	97%	16%	42%	20%	98%	73%	39%

**HEIFER BULL**





SRJJ RIDGELINE 0012 A full Brother to SRJJ HIGH TIME 0024 sold to Leeuwenburgh Angus, Lethbridge, AB

**79**

**SRJJ HIGH TIME 3121**

DOB: 03-26-2023 TATTOO: SRJJ 3121 RAAA#: 4863924

RED TER-RON PARKER 34A	TER-RON PARK PLACE 18Y	PERF.	RATIO													
SRJJ HIGH TIME 0024	RED TER-RON DIAMOND MIST 164	BW	78 94													
936 ECHO 2526	LARSON THUNDEBIRD 936	205	575 83													
	ECHO 091 2526	WWT														
RED LWNBRG HARVESTOR 103C	TED HARVESTOR 154A	365	862 89													
SRJJ TASSEL G066	RED TED MAGNUM 141Y	YWT														
SRJJ RIDIN RED Z66	EAR M RIDIN RED 0207															
	RED CHATEAU X65															
HB	GM	CED	BW	WW	YW	ADG	MILK	ME	HPG	CEM	STAY	MARB	YG	CW	REA	FAT
22		9	0.9	62	101	0.24	19	8	10	4	13					
94%	%	93%	92%	48%	45%	40%	95%	80%	69%	96%	68%	%	%	%	%	%

**80**

**SRJJ HIGH TIME 3164**

DOB: 04-04-2023 TATTOO: SRJJ 3164 RAAA#: 4863974

RED TER-RON PARKER 34A	TER-RON PARK PLACE 18Y	PERF.	RATIO													
SRJJ HIGH TIME 0024	RED TER-RON DIAMOND MIST 164	BW	94 111													
936 ECHO 2526	LARSON THUNDEBIRD 936	205	721 104													
	ECHO 091 2526	WWT														
CRUMP RUNAWAY 3178	CRUMP 300 ULTRA MAGNUM Y106	365	973 100													
SRJJ CHEYENNE F53	BUF CRK PRIMROSE U021	YWT														
SRJJ M-IMPACT B53	RED BRAND X05															
	SRJIMY IMPACT W653															
HB	GM	CED	BW	WW	YW	ADG	MILK	ME	HPG	CEM	STAY	MARB	YG	CW	REA	FAT
36	25	9	1.2	70	109	0.24	19	-1	11	3	13	0.3	-0.02	23	0.26	0
79%	77%	91%	94%	18%	27%	43%	95%	28%	57%	97%	69%	79%	13%	55%	25%	18%



Reference Sire RED TER-RON PARKER 34A



Reference Dam 936 ECHO 2526 Y26





81

SRJJ HIGH TIME 3188

DOB: 04-06-2023 TATTOO: SRJJ 3188 RAAA#: 4864008

RED TER-RON PARKER 34A  
 SRJJ HIGH TIME 0024  
 936 ECHO 2526

TER-RON PARK PLACE 18Y  
 RED TER-RON DIAMOND MIST 164

PERF. RATIO

LARSON THUNDEBIRD 936  
 ECHO 091 2526

BW 91 107

RED T-K UNTAPPED 21Z  
 SRJJ LARKABA E90  
 MR LARKABA Y901

RED BAR-E-L WARDEN 144W  
 RED HAMCO LAURA 55

205 WWT 616 89

BAR M MR MISSION 0024  
 J S 4405P LARKABA 901

365 YWT 967 100

HB	GM	CED	BW	WW	YW	ADG	MILK	ME	HPG	CEM	STAY	MARB	YG	CW	REA	FAT
32	15	7	2	66	105	0.24	19	5	11	3	14	0.18	-0.03	22	0.3	0.01
85%	91%	98%	97%	30%	35%	42%	96%	61%	49%	97%	62%	96%	11%	59%	20%	23%



RED T-K UNTAPPED 21Z



LOT 82

82

SRJJ HIGH TIME 3087

DOB: 03-21-2023 TATTOO: SRJJ 3087 RAAA#: 4863878

RED TER-RON PARKER 34A  
 SRJJ HIGH TIME 0024  
 936 ECHO 2526

TER-RON PARK PLACE 18Y  
 RED TER-RON DIAMOND MIST 164

PERF. RATIO

LARSON THUNDEBIRD 936  
 ECHO 091 2526

BW 98 115

CRUMP PACESETTER 491  
 SRJJ LASAM D72  
 SRJJ LASAM B72

SL MTN SIGN 435-10Z  
 MDV VERNICE 1020

205 WWT 656 95

LELAND RED DIRECTION 8348U  
 PIE LASAM 713

365 YWT 964 99

HB	GM	CED	BW	WW	YW	ADG	MILK	ME	HPG	CEM	STAY	MARB	YG	CW	REA	FAT
19	34	8	1.9	71	118	0.29	19	6	10	3	13	0.32	0.05	29	0.28	0.02
96%	60%	97%	97%	15%	13%	13%	94%	67%	82%	98%	76%	74%	38%	30%	22%	55%

*Raunchy, reliable, & wrangling, True Ranch Life!*

*Thank you to all the Neighbors, Friends, & Family that help our operation!*







5175 ROAD 1026  
FROID, MT 59226



LOT 21



LOT 34



LOT 71



LOT 23